



Leiths NEWS

The newsletter of Leiths (Scotland) Ltd

Produced for our Employees, Customers and Colleagues.

LEITHS ACQUIRE NATURAL STONE SUPPLIER – FYFE GLENROCK

page 8



LEITHS

New Group Corporate Structure

page 3



Leiths supply ready-mix Concrete to Aberdeen Royal Infirmary

page 5



Kishorn Port Update
Dry Dock Update

page 8

LEITHS

Built on Quality

www.leiths-group.co.uk

Welcome to Leiths NEWS

In this issue

New Group Corporate Structure	p3
Asphalting the way to Blackhills Quarry	p4
Aberdeen Harbour Expansion Project	p4
New Forres Rail Ballast remains on track	p5
Leiths supply ready-mix Concrete to Aberdeen Royal Infirmary	p5
Civil Engineering & Surfacing Division Update	p6
Lawrie Demolition demolish Malcolm Allan Office Block	p7
Concrete Supply to Robertson's for Mile End Primary School	p7
Kishorn Port Ltd	p8
Queensferry Crossing	p9
Leiths acquire Natural Stone Supplier – Fyfe Glenrock	p10-11
A Greener Shade to Asphalt	p12
Lochaber Rural Education Trust – Washed Gravel Donation	p12
Cove in Bloom celebrates the History of Cove	p13
Health, Safety and Environmental	p14
Leiths Eyecare Policy	p15
Construction Workers Helpline	p15
Markon's Miracle Baby	p16
Horsing Around	p16
Employee Charity Events	p17
A Day in the Life of . . . David Rennie	p18
George Mathers Retires, after 40 years' service	p19
Employees Successfully Complete First Year at University of Derby	p19
Competition	p19

Message from the Chairman

In this latest edition of Leiths News, we focus on our recent acquisition of Fyfe Glenrock, a supplier and processor of natural stone based at Oldmeldrum, not far from Aberdeen. This investment continues the tradition of investing in good quality businesses relating to quarrying in Aberdeenshire. We welcome the Fyfe Glenrock Team to the Leiths Group and look forward to growing the business.

As many of you will know, Simon Russell, our Chief Executive since 2007 was due to retire at Christmas. This has prompted me to consider the management of the Group going forward and you will see on page 3 how we intend to manage the business into the future. My son, Phil, will step up to become Deputy Chairman and my daughter, Sam, will take on the role of Company Secretary. Simon has agreed to stay on for a further year as a Non-Executive Director, looking after our investment at Kishorn and assisting with the integration of Fyfe Glenrock.

Our investment in a new asphalt plant and drystone processing plant at Blackhills Quarry will ensure that this quarry continues in its key role as the main supplier of construction materials into the Aberdeen market for many years to come.

The opening of the new Queensferry Bridge in August was a major milestone in the uprating of Scotland's infrastructure, and we can be proud that Markon played a part; installing all the road markings, road studs and special coloured surfacings to the bridge deck and approach roads.

It is heart-warming to note that many of our employees engage in local charitable events. Some of these are highlighted in this edition, but I know that there are many more instances where Leiths people provide invaluable support to local charities and good causes.

Ian Leith
Chairman



Get in Touch!

Leiths News is published for employees, customers and colleagues of the Leiths Group and its associated companies.

Leiths News will be published on a regular basis but we can only do this through the contributions of articles and features from our employees. If you have any comments, ideas for stories, or pictures for future issues, please get in touch.

I hope you enjoy this edition of Leiths News and thanks to everyone who has contributed so far.

Caroline Anderson, Editor

T: +44 (0)1224 293260

E: canderson@leiths-group.co.uk

www.leiths-group.co.uk

NEW GROUP CORPORATE STRUCTURE

I RECENTLY ANNOUNCED THAT SIMON RUSSELL, OUR CHIEF EXECUTIVE WILL BE RETIRING AT THE END OF 2017. I HAVE CONSIDERED THE STRUCTURE OF THE GROUP GOING FORWARD TO ENSURE THAT IT IS EFFECTIVELY MANAGED INTO THE NEXT DECADE AND BEYOND.

The family shareholders are committed to building the business for the next generation and whilst retaining the role of Chairman, I have appointed Phil Leith as our Deputy Chairman and Sam Leith, as Company Secretary.

I do not intend to replace Simon with another Chief Executive, but have created a Board of Directors from 1 October 2017, comprising Phil Leith, Sam Leith, Grant Milne, David Steel, Graeme Kinghorn and

myself. Simon will also be a member of the Board as a Non-Executive Director.

Phil, reporting to myself, now has management responsibility for the Group and retains his responsibilities for Group Health and Safety, with Dave Bremner, our Group Health and Safety Director reporting to him.

Grant continues as Group Managing Director (Quarries) and retains his existing portfolio of responsibilities, namely Sales, Precast, Quarries, Concrete, Asphalt, the Laboratories, Plant, Procurement and Fleet and Distribution for Leiths, Ross and Joss.

David has been appointed Group Managing Director (Contracting), and heads up the existing Leiths Civil Engineering and Surfacing Division together with Executive responsibility for Markon, Lawrie Demolition and M&M Roadsurfacing. David also heads up the new Property Management and Development Division.

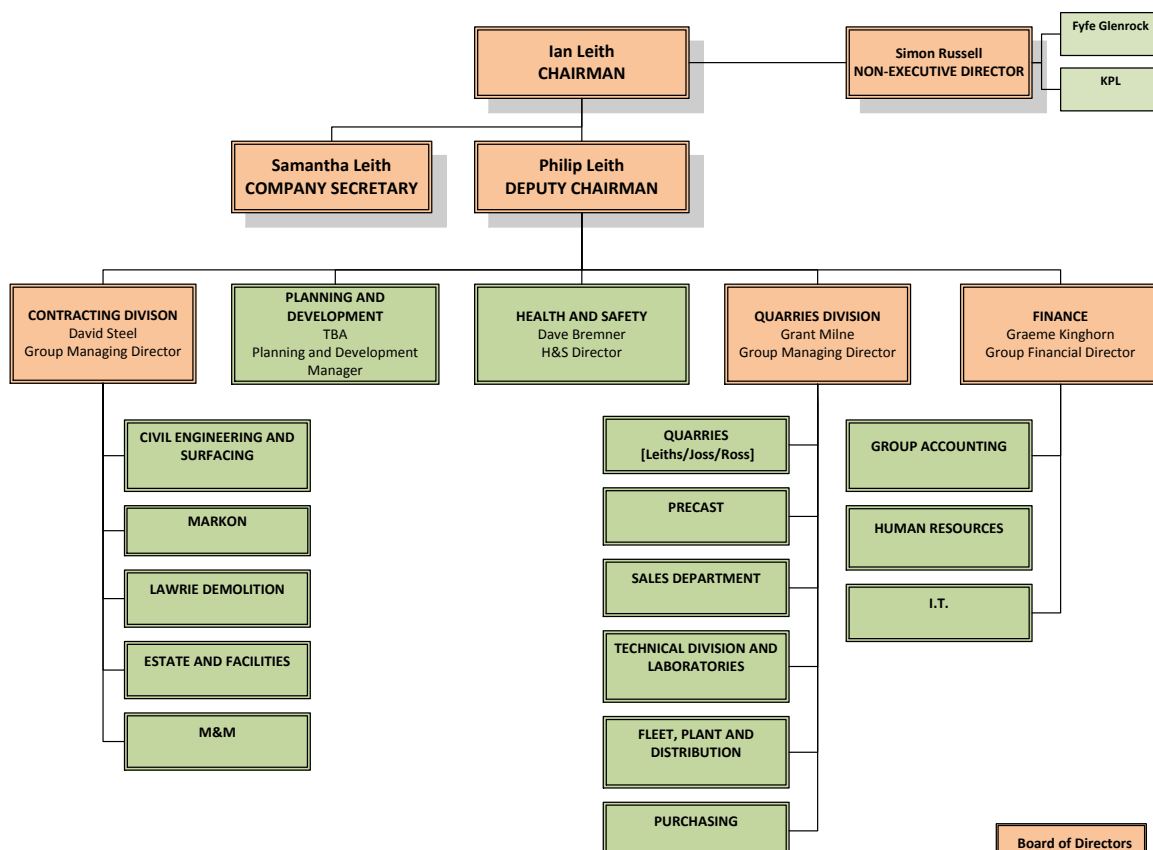
Graeme continues with his current responsibilities for Group Accounting and IT, and also takes on responsibility for the HR Department, with Pat Dunlop reporting to him.

Simon will continue to assist with the management of the Group until the end of 2018. As a Non-Executive Director, he will oversee and mentor the transition to the new structure. He will also head up our interests in Kishorn Port Ltd and the newly acquired Fyfe Glenrock.

This new structure builds on the considerable strengths of our existing Executive Team and represents a succession plan that will take the Group forward into an exciting future.

Ian Leith
Chairman

LEITHS GROUP



Asphalting the way at Blackhills Quarry

WORK IS NEARING COMPLETION ON THE CONSTRUCTION OF A STATE-OF-THE-ART ASPHALT PLANT TO REPLACE THE AGING PARKER PLANT THAT HAS BEEN ON THE SITE SINCE THE MID-EIGHTIES. THE NEW WIRTGEN TBA2000U PLANT WILL BE CAPABLE OF PRODUCING 160 TONNES PER HOUR OF ASPHALT THROUGH ITS 2 TONNE BATCH MIXER.

To comply with our environmental obligations, ISO50001, energy saving equipment is being utilised wherever possible to reduce the carbon footprint of the plant. Passive systems are also being used to increase the thermal efficiency of the bitumen storage tanks and associated pipework. Compliance with stringent air quality limits will be ensured through the high efficiency dust collector and the continuous electronic monitoring of the exhaust stack emissions.

Hot asphalt can be stored in 4 x 50 tonne heated mixed material hoppers, as well as a direct feed from the mixer, to ensure that customer demand will be met, even at the busiest of times.

Preparation works started in January 2017, with the quarry blasting and processing approximately 12,000 tonnes of granite, to allow the cold feed bins to be fed from a high level and prevent the need to install loading ramps.



The new Asphalt Plant at Blackhills

Foundations for the cold feed bins, and the construction of a 4.5m high concrete retaining wall, started in February, with the bulk of the civils work being carried out by Leiths in-house Construction division. The fabrication workshop at Leiths' Rigifa site, produced structural members for the retaining wall. Lochton Precast, another Leiths company, produced the 63 reinforced concrete wall panels.

October sees individual plant systems being commissioned by the Wirtgen engineers, with

full system commissioning being expected within the next couple of weeks. Following on from commissioning, the plant will undergo in-depth quality control testing, to ensure mixed materials meet the high standards that our customers have come to expect from Leiths.

This key investment within the south side of Aberdeen City will enable us to continue supplying high quality materials to all our customers with reduced waiting times.

ABERDEEN HARBOUR EXPANSION PROJECT

LEITHS ARE PROUD TO BE A PRIMARY SUPPLIER OF MATERIAL FOR THE £350 MILLION ABERDEEN HARBOUR EXPANSION PROJECT (AHEP) WHICH COMMENCED IN MAY THIS YEAR.



Aberdeen Harbour Board has named Dragados as the principal contractor for the 3-year project in Nigg Bay which will be known as 'Aberdeen South Harbour'. It will consist of 1,200 metres of breakwaters, 1,432 metres of quayside and is scheduled to be completed in the summer of 2020.

Located to the south of the existing Aberdeen harbour, the development will provide new harbour facilities and accommodate larger vessels such as cruise ships.

Due to the large volumes of rock required for this project, advance production started at Blackhills Quarry in December 2016 in readiness for deliveries starting in May 2017.

The primary product being produced for the two breakwaters is referred to as core material which is a 0.1–500kg graded rock.

However, we are also producing various other materials including 1–3t rock armour which is used to protect the outer faces of the breakwaters.

Production is being undertaken with a vast array of plant including excavators, dump trucks, loading shovels and a heavy duty trommel.

Specifications are particularly tight when you are engaged in marine works and it's vital to ensure product compliance is maintained at all times. Our Technical team have played a major role in overseeing production with regular inspections and testing being undertaken.

Transporting rock of this nature is a demanding task and it's for this reason Leiths invested in a fleet of new tippers with specially designed steel bodies capable of withstanding the day in day out deliveries of these materials.

To date we have supplied material to form the new north breakwater access road, 180m of the north breakwater and are about to commence supplies for a drilling platform. The construction of the breakwater has ceased for the winter due to the harsh weather conditions but will restart again in April 2018.

Leiths are looking forward to another exciting year assisting Dragados in delivering a successful project for Aberdeen Harbour Board.

New Forres Rail Ballast remains on Track

The outstanding success of the rail ballast produced at New Forres Quarry continues, with the product now being granted a Certificate of Full Acceptance by Network Rail in August of this year which means it can now be supplied to any depot across the UK.

Our ballast journey started when BAM Nuttall were appointed the principal contractor for the £170 million upgrade of Scotland's rail link between Aberdeen and Inverness. The project, Highland Enhancement Programme (HEP) consists of installing 16 miles of double-track line between Aberdeen and Inverurie, as well as building a new station at Forres and addressing railway alignment.

BAM Nuttall are also extending the platforms at Inch and Elgin to accommodate longer trains, upgrading signalling systems along the route and installing infrastructure to allow a new station to be built at Dalcross and Kintore.

Railway ballast can only be manufactured from a limited number of quarries due to the high demanding durability and resistance to abrasion requirements of the stone. However, following detailed research of the specifications, it became apparent the aggregate at New Forres Quarry was ideal.

During the summer of this year Leiths reconditioned a wash plant which became available at Nether Park Quarry in Aberdeen and delivered it to New Forres Quarry specifically for ballast production. The ballast has to be washed thoroughly before supply as Network Rail have demanding conditions to ensure a clean dust free product.

The investment in the wash plant has now allowed the team at New Forres Quarry to increase their output to meet the ever-growing demand for the product.

Moray Area Manager, Campbell McNab, and his team have worked closely with our Contract Crushing Division, the Technical team at Parkmore and Ian Rae to ensure the continued success of the ballast.

The recent award of Full Acceptance is a fantastic achievement considering the ballast was only first approved for supply to Forres and Elgin as part of HEP in January 2017.

So, the next time you are standing at a platform waiting for a train, take a moment to look down at the tracks, you could well be looking at New Forres ballast.



Leiths supply Ready-Mix Concrete to Aberdeen Royal Infirmary

Leiths have just completed the supply of ready-mix concrete to the new £10m multi-storey car park at Aberdeen Royal Infirmary. The £10m provided to improve car parking at Aberdeen Royal Infirmary has been pledged to NHS Grampian by The Wood Foundation. The foundation, set up by businessman Sir Ian Wood and his family, is making the money available for the construction of a multi-storey car park for patients and visitors and will have at least 1,000 spaces.

Ready-mix concrete supply from Loch Hills commenced in December 2016 to the principal contractor Balfour Beatty for the foundations of the steel frame building, with Loch Hills supplying 1,500m³ over a 3 month period.

Ready-mix concrete supply from Loch Hills commenced in December 2016 to the principal contractor Balfour Beatty for the foundations of the steel frame building, with Loch Hills supplying 1,500m³ over a 3 month period.

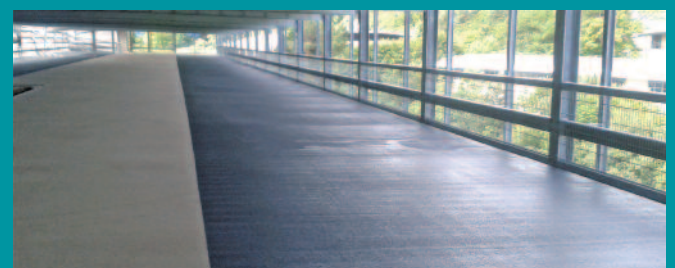


On completion of the foundation concrete, Leiths also secured the supply of ready-mix concrete for the decking of the multi-storey car park to Huber Car Park Systems, winners of the 2017 BPA Best New Car Park who are synonymous with car parking solutions across the UK and Europe.

Huber required 3,500m³ of a C30/37 ready-mix concrete over a 12 week period and Leiths worked closely with Huber to develop a mix that could be pumped the distance and height required and remain workable for placing and finishing. As a large volume of ready-mix concrete was placed during the summer, a ggbs blend was used and an admixture with good slump retention properties.

Due to restrictions on site, washout facilities were not available to clean the mixer trucks. Leiths provided concrete socks for mixer chutes and trialled a washout bath, which demonstrates Leiths commitment to work with customers to help find solutions to any problems that may occur.

The new £10m multi story car park is due to open in October and Leiths are pleased to have been involved in ready-mix concrete supply to this project which will greatly benefit both patients and visitors using Aberdeen Royal Infirmary.



CIVIL ENGINEERING & SURFACING DIVISION UPDATE

LEITHS C&S DIVISION HAVE STARTED THE INTERNAL SURFACING AND EXTERNAL CIVILS TO THE NEW ABERDEEN EXHIBITION AND CONFERENCE CENTRE

Awarded by PJ Carey, the works are valued at over £3.5m with approximately 30,000T of bituminous surfacing, with 60% programmed to be complete by Christmas this year. The HRA surface course will be one of the last remaining items to be completed currently scheduled for early 2019.

The photo below shows an internal link road being surfaced with binder course by Foreman Scott Reid's squad. The bituminous material is being supplied from the nearby asphalt plant

at Loch Hills. An elevation of the new £400m AECC can be seen in the background. The external civils is well underway with the Dyce Drive junction [pictured] due for completion by the end of October 2017. The A96 junction is due to start mid-October and with a winter completion in our sights.

Wellheads junction will commence in January 2018 to allow our civil operatives to conclude their works. The junctions all have their own challenges but the work scope generally



includes excavation, ducting, drainage, sub-base, kerbing and surfacing.

C&S are not the only division contracting on the new AECC as Lochton Precast are nearing completion with their supply of approximately 250 precast concrete stairs valued in the region of £260k.



LEITHS C&S DIVISION ARE NOW NEARING COMPLETION OF THE AMBITIOUS INVERNESS WEST LINK ROAD PROJECT (IWLR)



The surfacing package, which consisted of approximately 23,000T was awarded in the summer of 2016 and will form 2.5km of new roadway and footpaths.

The surfacing team from New Forres were, however, not the only members of the Leiths Group involved in the project with our Mid

Lairgs Quarry supplying aggregates and our Achilty Quarry supplying their famous walling stone for the boundary walls.

Markon also provided planing services and road markings, demonstrating the strength and depth of the Group's capabilities.

RECENT CONTRACT AWARDS FOR LEITHS C&S DIVISION

Leiths C&S Division have recently been successful in tendering for the A947 Mill of Kingoodie and resurfacing works in the Aberdeen City in the Grampian area, whilst further North we were successful in capturing the surfacing works at Forres Railway Station with a repeat client, Bam Nuttall, who are leading the Highland Enhancement Programme.

Surfacing works for repeat clients in the housing sector in both the Aberdeen and Inverness area continues to bolster a healthy workbook.

Lawrie Demolition demolish Malcolm Allan Office Block

Due to the downturn in the oil and gas industry and their client relocating, Malcolm Allan Housebuilder's property known as Fintry House on Lawson Drive, Dyce had remained without a tenant for some time. Despite actively looking to get a new tenant, the prospect of a dramatic upturn in the oil and gas industry looked unlikely so Malcolm Allan made the decision to demolish the building to save on paying full rates on an unoccupied building.

They appointed Lawrie Demolition to carry out a full demolition of the building, foundations and car park. The works took 8 weeks to complete from start to finish which included a full soft strip of the interior of the building, segregating materials such as timber and plasterboard for re-cycle.

The next phase of works was the mechanical demolition of the structure. Lawrie utilised it's Volvo 380 and 290 fitted with hydraulic metal cutting shears and selector grab attachments to systematically dismantle the building to floor slab level, with all re-cyclable materials removed from site. The floor slab and associated foundations were mechanically

grubbed up and broken down using a hydraulic pulveriser ready for crushing. Approximately 3,000 tonnes of materials were generated and crushed to a 4" crusher run with the materials certified by Leiths Technical Department. In total 92% of the original structure was re-cycled.

The three-storey office block on the Pitmedden Industrial Estate in Dyce was built only 18 years ago and was home to a succession of North Sea outfits. Because the building was relatively modern it got a lot of attention from locals and former employees who were unsure why a building in such good condition was being demolished.

Colin Wood, Technical Manager at Malcolm Allan was interviewed on site by a local MP to explain that it made economic sense to demolish the building rather than it sit unoccupied for years and the business paying a huge amount of money on rates. "The cost of demolition will be less than 12 months of rates. A contractor has been appointed and the main structure will be down within a month - then we will look at any opportunities for redevelopment.



The former Malcolm Allan Office Block in Dyce



Demolition begins

Concrete Supply to Robertson's for Mile End Primary School in Aberdeen

AS PART OF ROBERTSON CONSTRUCTION'S CONSIDERATE CONSTRUCTORS SCHEME (CCS) PROGRAMME, LEITHS WERE HAPPY TO BE INVOLVED IN THE RECENT MILE END SCHOOL GARDEN UPGRADE WHICH SAW THEIR SCHOOL GARDEN IMPROVED TO ALLOW WHEELCHAIR ACCESS.

The Considerate Constructors Scheme is a non-profit-making, independent organisation founded in 1997 by the construction industry which provides a series of benchmarks that are above the average building site operational standards. When these benchmarks are met, or bettered, the entire community benefits.

As part of the CCS programme, Leiths were delighted to donate ready-mix concrete to the project. Due to the quantities being unclear, we supplied the SITEMIX truck to allow as much flexibility as possible onsite. In total the project required just over 4m3 of ready-mix concrete and the works were completed within a much shorter space of time.



KISHORN PORT LTD

Dry Dock Update

The last issue of Leiths News reported on the work being undertaken at Kishorn to resurrect the dry dock in anticipation of a contract to cast eight 16,000t floating concrete caissons for an offshore windfarm.

Unfortunately, progress on this contract has been delayed due to unforeseen circumstances. However, in recent weeks we have been progressing a number of enquiries relating to the storage and decommissioning of redundant North Sea oil structures.

Preparatory works at the site are now complete, including the blasting of an access ramp into the floor of the dry dock.



These dramatic photographs were taken by a drone in the last few weeks and you can clearly see the imprint of the Ninian Central platform on the bottom of the dock, and the Leiths and Ferguson lorries give a good sense of scale!!

Kishorn Commandoes Revisited !!

Much is written about the so named "Kishorn Commandoes" who built the 600,000 tonne Ninian Central Platform in the dry dock at Kishorn during the late 1970's. There is even a famous folk song written about their endeavours!!

Perhaps then we shouldn't be surprised that the Kishorn Yard hosted a training exercise by real life Commandoes in mid-October.

With the agreement of Kishorn Port Ltd, a significant number of Royal Marines from 1 Assault Boat Group descended on Kishorn to take part in Operation Raging Torrent. They established a forward support base for the exercise at Kishorn and it was fascinating to watch the comings and goings of hovercraft and other assault vessels.

The details of the exercise are top secret, but we did manage to capture the essence of what they were up to on a drone photograph !!



QUEENSFERRY CROSSING

OVER THE PAST FIVE YEARS, MARKON HAVE BEEN PROUD TO BE INVOLVED IN THE HISTORIC QUEENSFERRY CROSSING PROJECT.



Working directly for the Forth Crossing Bridge Constructors JV, Markon were awarded the £350k contract to install road markings, road studs and coloured, textured surfacing across the 10km of newly constructed motorway, as well as the surrounding roads, together with the structure itself.

Beginning in 2012, with the construction of the JV head office at Rosyth and then moving on to the A904/Queensferry Gyratory to the south of the bridge, work has been ongoing to construct, not only the bridge, but the network of roads carrying traffic from Edinburgh and Fife to the bridge.

As well as the permanent markings, there have been many temporary schemes involving complex traffic switches to allow construction work on the network to continue, whilst maintaining two lanes of traffic in each direction throughout the project.

Of course, there was a final push in the weeks leading up to the eventual opening of the bridge on 30 August, followed by temporary schemes to then close the bridge to allow various celebrations and ceremonies to take place, and then re-open it overnight on 6/7 September.

All went well and work will continue until the end of October 2017 to complete the public transport links which will eventually carry buses and taxis across the Forth Road Bridge.

THE FACTS



The Queensferry Crossing is the UK's tallest bridge and an engineering triumph.

It is the third bridge over the Firth of Forth, near Edinburgh.

It is the longest freestanding balance cantilever in the World.

The 10 year project involved:

35,000 tonnes of steel.

150,000 tonnes of concrete.

Workmen from **24** different countries.

The towers are a terrifying **210m** high.

Strands of steel cable hung from the towers suspend the road below.

There's more than **23,000 miles** of cable – almost enough to stretch round the equator.

The old bridge often has to shut because of high winds – The Queensferry Crossing has wind shields so that won't be a problem.

Leiths acquire Natural Stone Supplier – Fyfe Glenrock

IN EARLY JULY, LEITHS WAS NOTIFIED THAT FYFE GLENROCK, A SUPPLIER AND PROCESSOR OF HIGH QUALITY NATURAL STONE PRODUCTS BASED IN OLDMELDRUM NEAR ABERDEEN, WAS UP FOR SALE. AFTER A FLURRY OF ACTIVITY, WE ACQUIRED THE BUSINESS IN RECORD BREAKING TIME ON THE 18 JULY 2017 AND IT IS NOW A NEW DIVISION OF LEITHS (SCOTLAND) LTD.



Allan Bruce (left), General Manager at Fyfe Glenrock, together with the Fyfe Glenrock Team at the Oldmeldrum facility

Fyfe Glenrock can trace its history back to 1846, when the then John Fyfe Ltd established their business at Kemnay, some 20 miles northwest of Aberdeen.

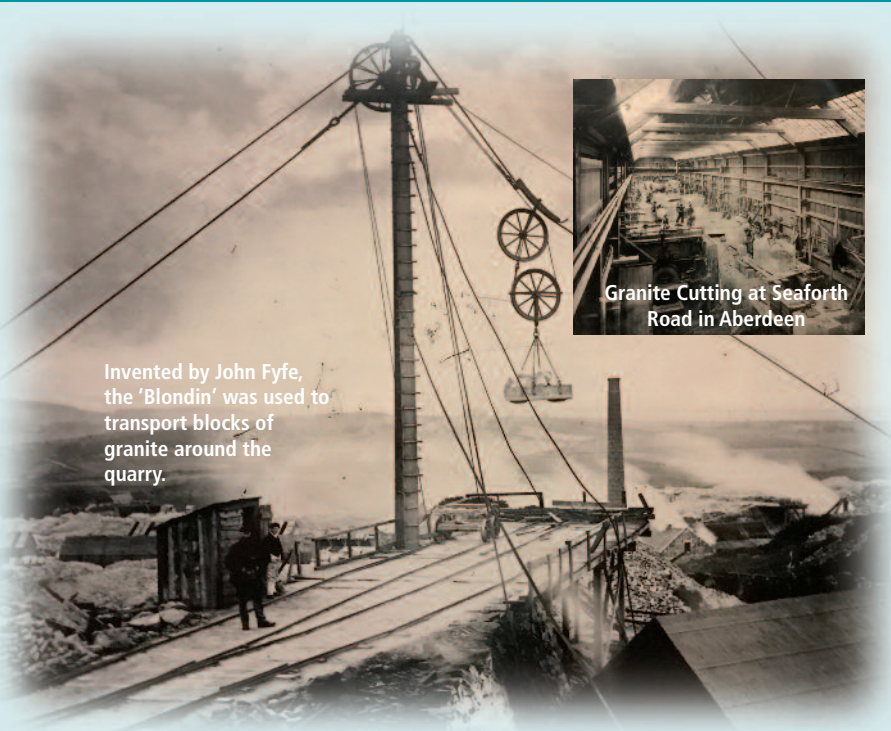
Since that time, the famous silver-grey granite that was quarried at Kemnay has adorned many prestigious buildings throughout Aberdeen, including Marischal College, which is the second largest granite building in the world after The Escorial, the King of Spain's historical palace near Madrid. The same granite was also used in the construction of the Thames Embankment, the Waldorf Hotel in London and many notable buildings throughout the UK and the world.

Our own reception area at HQ in Cove is floored with Kemnay granite, and Fyfe Glenrock cut and polished the Bluehills granite inset in our Boardroom table!!

With the supply of Kemnay silver-granite now exhausted, Fyfe Glenrock imports many different and exotic natural stones from around the world, including China, India, Portugal, Brazil and Scandinavia. These are cut, polished and engraved by the 19 strong Team at the purpose-built facility in Oldmeldrum. Here, a wide range of architectural components are produced as well as monuments and memorials, kitchen and bathroom surfaces and street and garden furniture.



Early days in Kemnay Quarry



Invented by John Fyfe, the 'Blondin' was used to transport blocks of granite around the quarry.



Granite Cutting at Seaforth Road in Aberdeen



Holyrood reception area

A more recent contract was the supply of walling and flooring to the Scottish Parliament buildings at Holyrood, Edinburgh, where the contract value was in excess of £3.5 million.



"Ascension" crafted by John Maine RA, a sculptor who works closely with Fyfe Glenrock, as a memorial to the SAS in Hereford Cathedral

One of the more moving sculptures produced at Oldmeldrum in 2017 was "Ascension" crafted by John Maine RA, a sculptor who works closely with Fyfe Glenrock, as a memorial to the SAS in Hereford Cathedral.



The Cairngorms National Park marker stone

Many of you will have undoubtedly seen the marker stones that identify the boundaries of the Cairngorms National Park – these were all produced by Fyfe Glenrock



Fyfe Glenrock facility in Oldmeldrum

Our Chairman, Ian Leith, is particularly excited by the acquisition, as his Great Grandfather, James Leith owned and operated a number of monumental granite quarries in the area, including Cairncry and Persley. Granite from these quarries and Kemnay was used locally by James in the construction of the Persley Bridge across the River Don, the construction of Riverside Road and the Dundee waterworks.

Ian commented:



James Leith

"The acquisition of Fyfe Glenrock adds another quality Division to the Groups portfolio. I personally look forward to working with the Team and developing a business that has deep roots in Aberdeenshire and that I have long admired"

A Greener Shade to Asphalt

ASPHALT PRODUCTION IS A HIGH-OUTPUT PROCESS THAT IS OFTEN VERY ENERGY INTENSIVE. LEITHS ARE ALWAYS LOOKING FOR WAYS TO LEAD THE INDUSTRY AND REDUCE THE ENVIRONMENTAL IMPACT ASSOCIATED WITH QUARRY OPERATIONS AND IMPROVE ON ENERGY EFFICIENCY.



Mid Lairgs Quarry is setting the standard by utilising an innovative LPG system supplied by Flogas as the fuel for asphalt production.

Asphalt production has traditionally burned gas-oil as the fuel source for drying and heating the aggregates during the manufacturing process. However, this is not always the best fuel choice environmentally. By using LPG instead of gas-oil, Mid Lairgs Quarry can boast CO₂ savings of up to 22% and, more specifically, methane emission reductions of up to 43% and a staggering reduction of up to 99% from nitrous oxides – the pollutant that is driving the car industry away from diesel engines.

Leiths can confidently state that the asphalt produced at Midlairgs is a 'Greener shade of Black'

Lochaber Rural Education Trust WASHED GRAVEL DONATION



LEITH'S WERE RECENTLY CONTACTED BY LOCHABER RURAL EDUCATION TRUST WHICH IS A UNIQUE FACILITY OFFERING EDUCATION AND RECREATION TO CHILDREN AND ADULTS IN LOCHABER.

The Trust provides education, training and opportunities for those who are interested in rural life and history and also provides educational support for many groups and schools in the local community.

The aim of the Trust is to develop the area to provide facilities which do not exist elsewhere in Lochaber, for the benefit of people of all ages and abilities. They are a fabulous resource having a fully equipped classroom and an additional meeting room with a capacity for over 30 students of all age ranges and a large outside space for activities and gardening projects.

In the frequent bad weather the space to the rear of the building becomes flooded directly outside the animal sheds and it becomes difficult for the children and young adults to continue when there is deep puddles and uneven surfaces. Leith's gladly donated washed gravel from our nearby Highland Lime Quarry near Fort William to solve the problem – but were unable to do anything about the infamous Lochaber rainfall!

Moirra Hartley, Trust Manager, said, "Thank you so much for your recent donation. Your active support has made a great difference to our activities and the development of our garden area. We are very grateful for your support and generosity and can't thank you enough."

Following Leiths' donation, the trust enlisted the help of their Seed to Supper Project children from three local schools who had great fun barrowing the chips back and forth.

Pictured here is the finished result.



Cove in Bloom Celebrates the History of Cove

Readers may remember previous articles within Leiths News highlighting our association with Cove in Bloom, celebrating the heritage of the village by commemorating the farming, fishing and quarrying industries that formed Cove and Altens.

Leiths have played an active part in the development of this ongoing project, including donating and siting three standing stones at the entrance to the village of Cove on the Coast Road which highlights the history and heritage of the village (article included in Edition 3).



During this time, Stewart Milne Homes bought an area of land in Cove that had previously been a tip and contracted with Blackwells to clear it out and reinstate the land for building. The site foreman at the site presented Cove in Bloom with three ornaments made from oil industry parts that had been found in the tip which were placed on bases made by the Leiths Precast Division and sited on Cove Road. This highlighted the influence of the oil industry within the village (article highlighted in Edition 7).



The fishing industry still needed to be represented and this is where the most exciting project for Cove in Bloom came to life. They wanted a statue to commemorate this industry and contacted a locally based Brazilian sculptor, named Albertino Costa, whose working style had fired their imagination. Working in a flexible way, Albertino incorporated ideas from all around him as the work progressed.

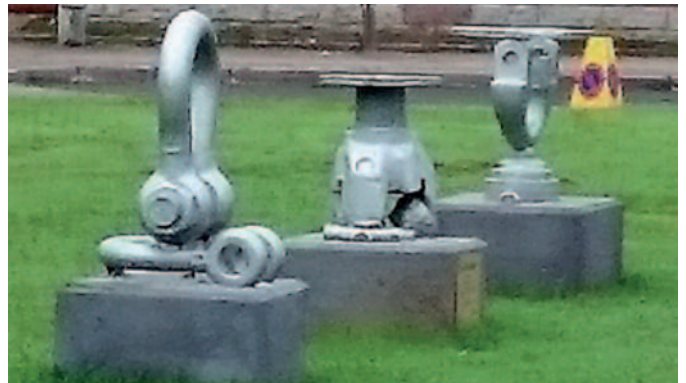
Albertino was commissioned to make a sculpture for the Cove fishing industry based on Isie Caie, the last fishwife in Cove, who was still selling fish in Aberdeen in the 1960's. The team had the marble stone brought into Cove Harbour in July 2016 where Albertino spent hours chipping and cutting at the stone, and talking to the folk who visited the harbour. This included the fishermen using the area, a sub-aqua diver and photographer, kayakers, artists, families, dog-walkers, among others, and of course, the harbour owner, who is a plastic surgeon and a Hindu.

Albertino not only listened to the stories he heard, he also found ways to incorporate them into the sculpture. The memorial developed with not just Isie Caie, who can be seen with a creel on her back to the front of the stone, but fishermen bringing in their nets, the prow of an Aberdeen registered boat, a mother and children, limpets, a fish or two,



a crab, waves racing up the stone, a starfish, and an elephant trunk representing the Hindu god Shiva.

The sculpture was to be sited in the Green on the corner of Stoneyhill Terrace, the road where Isie had lived, but it needed something to sit on, and this is where Leiths again became involved by providing and siting a large block of granite.



Cove in Bloom were invited into the quarry to choose the rock and in August 2017 the base was set in place just in time for the Beautiful Scotland judges' visit to Cove. They were impressed with what had been achieved, not only in the floral displays and the woodland walk they look after, but also with the sculpture and the generous support given by local companies, such as Leiths.

Moving the sculpture on to the base proved more difficult than had been anticipated. The weather had been unkind and the ground had been too soft to permit the final positioning and, unfortunately, the first efforts were unsuccessful. However, finally, on Friday 3 November, the official unveiling of the sculpture took place at The Green at Stoneyhill in Old Cove.

Wendy Suttar, on behalf of Cove in Bloom, opened the ceremony, with Christy MacSween, Isie Caie's granddaughter providing an introduction to her grandmothers interesting life story. The Lord Provost was also in attendance to take part in the unveiling.

The Cove in Bloom group unveiled the sculpture of Isie Caie, a tribute to the village's last fish wife, by artist Albertino Costa (left).





An estimated 60,000 people each year in the UK have an out-of-hospital cardiac arrest and, sadly, less than 10% of those people will survive. Yet, if a bystander is able to start CPR (cardiopulmonary resuscitation), a medical technique for reviving someone whose heart has stopped beating by pressing on their chest and breathing into their mouth, they could double a person's chances of survival.

During a refresher First Aid at Work course being attended by Dave Bremner, this app – Lifesaver – was promoted as a learning tool for, not only first aiders, but the public in general.

This app is easily downloadable to phones and tablets and not only deals with cardiac arrest but also choking and unconscious casualties.

Dave said about the app; "I have been a first aider for 25 years and this is the most ground-breaking learning tool I have seen in first aid training; the app itself puts the user in the position of the decision maker and lifesaver. This is the type of training that you don't want to use – but in using the app you may be able to save a life, I would definitely recommend it for first aiders and even family members".

The app can be downloaded from the Resuscitation Council on: www.resus.org.uk/apps/lifesaver

Seatbelts

We constantly remind plant operators about the need for wearing their seatbelts.

Did you know that 10% of all major accidents in quarries result from vehicles overturning?

The fact is that there is no such thing as a slow roll-over. When a vehicle overturns, the forces are such that you cannot hold on to the steering wheel to prevent impacting on the side or roof of the cab. If you are not wearing a seatbelt you may be thrown around the inside of the cab or, if the door is open, thrown out and crushed by the vehicle.

Twenty percent of quarry vehicle accidents result from overturning quarry vehicles and 8% of fatalities. Seat belts protect you from front, side and rollover accidents.

Will wearing a seatbelt reduce your chance of injury?

Experience and statistics show a considerable reduction in the number of injuries and their severity when a seatbelt was worn compared to when it was not.

The facts and figures are similar for construction plant and equipment with the safest place to be – in the driver's seat.

Remember to belt up – it could be the difference between Life and Death!

Managing and Maintaining our Environment

At Leiths we try to keep negative impacts on the environment to a minimum - we try to achieve this through regulation, continual monitoring of our performance and having working practices which are designed to reduce waste, energy consumption and emissions.

The environmental management element of our IMS helps us meet the necessary standard including those of our Environmental policy and ISO 14001 registration. We can only achieve our goals with the support of our employees. However, everyone can take a few simple actions both at work and at home to help the environment and save money:

ENERGY

Saving energy saves money and reduces our carbon footprint. Simple steps can help us save money and reduce our environmental impact:

- Turning off lights, computers and other electrical equipment at the end of the day.
- Turning off your computer screen if you are going to be away from your desk for more than 10 minutes or ensure the hibernation feature is set.
- Making sure radiators and vents are free and not blocked by desks or other furniture.
- Switching off radiators and turning down room thermostats in unoccupied areas not in common use.
- Keeping doors and windows shut.

WATER

Did you know a dripping or leaking tap can waste up to 100 litres of water per week. That could cost an extra £20 per year in water charges!

Please help by:

- Reporting leaks and drips.
- Using and encouraging others to use water wisely.

WASTE

Waste is a problem for the business as we pay for it twice - once for materials that we don't use and then again to get rid of them. At all of our sites, we have in place provisions for the safe collection and disposal of waste.

Please remember the waste hierarchy for safe collection and disposal of waste and remember... reduce, reuse and recycle.

When you do dispose of waste make sure it is properly segregated and is placed in the correct skip or bin.

REPORTING INCIDENTS

Please report any of the following accidents, spills or signs of pollution by contacting your Line Manager or a member of the HSEQ team immediately:

- Spills of potentially hazardous liquids or solid materials.
- Evidence of non-natural liquids and solids entering surface water drains.
- Oil leaks from vehicles, machinery or equipment.
- Fly-tipping.

We want to leave this planet to our children and children's children – so let's make a start now!





World Sight Day (WSD) is an international day of awareness, held annually on the second Thursday of October to focus attention on the global issue of avoidable blindness and visual impairment.

This year World Sight Day fell on 12 October 2017 and was the focus of the Rigifa Health and Wellbeing Campaign.

FACTS

- 80% of blindness is avoidable (i.e. preventable and/or treatable).
- 4 out of 5 blind people are needlessly impaired.
- About 285 million people are visually impaired worldwide. Preventable causes are as high as 80% of the total global visual impairment burden.
- 90% of the world's visually impaired people live in developing countries.

LEITHS EYECARE POLICY

The Company intention is to provide and maintain a healthy and safe working environment for all its employees, as well as ensuring that all that is reasonable and practicable is done to comply with the Health and Safety (Display Screen Equipment) Regulations 1992 and any accompanying regulations.

Employees who use a VDU (monitor, laptop, tablet or smart phone) are entitled to request an appropriate eye or eyesight test to be carried out by a competent person and may request a test at regular intervals every two years or sooner if recommended by the optician.

This policy covers all employees who are classed as Display Screen Equipment Users, and these regulations only apply to employers whose workers regularly use DSE as a significant part of their normal work (daily, for continuous periods of an hour or more). These workers are known as DSE users.

The policy also provides for employees who carry out daily duties where safety glasses are a necessary part of PPE.

There is no evidence to suggest that DSE work will cause permanent damage to eyes or eyesight, however, eye tests are provided to ensure users can comfortably see the screen and work effectively

without visual fatigue.

The cost of the test plus a contribution towards special corrective eyewear, if required, for VDU-use, or as required as part of PPE, will be met by the Company. Up to £65 for corrective eye care, and full cost of safety glasses will be met.

All eye tests are free in Scotland, you can have a free eye examination once every two years if you are between 16 and 59 years old.



Please contact the HR department to discuss.

CONSTRUCTION WORKER HELPLINE

- Need help with debt or money worries?
- Think some counselling would benefit you?
- Want some guidance about housing and social welfare
- Struggle with mental or physical health issues?

Call in confidence FREEPHONE 0808 801 0372

Lines are open 8am to 8pm – 7 days a week

LIFE DOESN'T ALWAYS GO TO PLAN. THE CONSTRUCTION WORKER HELPLINE OFFERS YOU FREE SUPPORT AND GUIDANCE IN TIMES OF NEED.

***Only construction worker 'manual operatives' and their dependants have access to financial assistance, for example, with rent or mortgage arrears.** Other construction employees (site and office based) have access to all other services.

B&CE's Charitable Trust set up the Construction Worker Helpline so you can feel confident speaking to a friendly voice, knowing they've the experience to point you towards the help you need. B&CE is a not-for-profit organisation with a clear focus on its members. The helpline was launched to help even more workers in construction.

B&CE has been providing financial products to the construction industry since 1942. We're pleased to offer our new Construction Worker Helpline service, a non-contractual benefit, set up by B&CE's Charitable Trust. (The Trust reserves the right to withdraw the service at any time.)

MARKON'S MIRACLE BABY

COREY HEALY, WHO WORKS AS AN AUTOCAD TECHNICIAN IN THE TRAFFIC MANAGEMENT DEPARTMENT AT MARKON, IS THE VERY LUCKY AND PROUD FATHER OF CLARA.

Little Clara Healy was born in March at 24 weeks and one day, weighing 1lb 3oz, little more than four sticks of butter. Clara had to stay in hospital for five long months whilst being cared for by the nurses in the anti-natal unit.

Corey recalled what it was like seeing his daughter for the first time after she was born, "She was barely the size of my hand. We could see through her - she was still translucent."

He said he and partner Sophie had to wait for three weeks just to touch their little girl due to doctor's concerns around infection. Corey and Sophie made sure to document the precious moments capturing touching photos



Clara before she came home from hospital

and footage of her first weeks of life. Through Facebook, these videos were viewed by thousands of people around the world and touched the hearts of many.

Against all the odds, Clara made remarkable progress and is now five months old, weighing nine pounds, and is finally home.

Corey and Sophie are now hopeful Clara will be able to continue to defy

the odds and develop like any other baby.

Clara's story reached people worldwide. Corey said, "Our NHS, and in particular the dedicated team who's 24/7 care resulted in this miraculous outcome, will receive donations from the proceeds of the sale from this story."

The couple are now hoping to raise awareness for other parents around premature births.



Corey and partner Sophie with baby Clara at home in Cumbernauld

HORSING AROUND

DAVIE LAMB, C&S's AREA MANAGER, BASED AT NEW FORRES, HAS AN 'UNBRIDLED' PASSION – HIS HORSES.

He had a successful summer showing his Hunter breeds at various agricultural shows throughout the north east.

Below are some of the events Davie attended:

Celebrating its 177th year, **The Royal Highland Show** is one of Scotland's most iconic events, showcasing the very best of farming food and rural life, including a world class show of cattle, light horse and heavy horse, sheep, goats and poultry.

Royal Highland Show – Hunter brood mare Moonlight Bay IV with foal Cullenbay Silver Something. (Mare second, Foal third)



2017 Rosettes – Rosettes from various shows during 2017



Davie with Cullenbay Heaven Sent winning Hunter Champion at Banchory and Reserve Champion at Granttown and Tarland

Banchory Show takes place on the last Saturday in July. The show, organised by the Deeside Agricultural Association, always pulls in the crowds and boasts a fun-filled programme of activities for all the family, including traditional horse events for Hunters, Ponies and Clydesdales.

Employee Charity Events 2017

OVER THE SUMMER, A NUMBER OF THE LEITHS' GROUP EMPLOYEES TOOK PART IN VARIOUS CHARITY EVENTS THROUGHOUT SCOTLAND.

COLIN BANNERMAN, LEITHS ENGINEERING MANAGER, AND HIS WIFE STEPH, TOOK PART IN THE 2017 LOCH NESS ETAPE CYCLE EVENT, WHICH FOLLOWS A 66 MILE ROUTE AROUND LOCH NESS, ON SUNDAY 23 APRIL. COLIN RAISED A TOTAL OF £560.62 (£205.00 OF WHICH LEITHS STAFF DONATED) IN AID OF MACMILLAN CANCER SUPPORT.



LEISA BROCK, LEITHS PURCHASE LEDGER SUPERVISOR, AND **CHERYL BISSET**, LEITHS FINANCIAL CONTROLLER, BOTH TOOK PART IN RACE FOR LIFE ON 11 JUNE. RACE FOR LIFE IS ORGANISED ON BEHALF OF CANCER RESEARCH AND LEISA (TOGETHER WITH PADDY, HER 11 YEAR OLD LAB) RAN THE RACE IN MEMORY OF HER DAD. CHERYL RAN THE RACE WITH HER SON ROBERT AND THEIR DOG KIZZY AND RAISED £100.00 FOR THE CHARITY.



HAYLEIGH STOKER AND **KAYLEIGH MILLER** FROM MONTROSE PRECAST SIGNED UP FOR PRETTY MUDDY IN JUNE AND COMPLETED A 5K RUN IN AID OF CANCER RESEARCH UK.

NICHOLA GREIG, LEITHS HR CO-ORDINATOR TOOK PART IN MAGGIE'S CULTURE CRAWL ON 24 JUNE. PART 10 MILE NIGHT-WALK, PART CULTURAL ADVENTURE, IT SAW 400 WALKERS TREK AROUND ABERDEEN'S CULTURAL LANDMARKS AND ICONIC VENUES. THE MAGGIE'S CULTURE CRAWL WAS THE FIRST ONE TO TAKE PLACE IN ABERDEEN AND IT RAISED OVER £64,000. MAGGIE'S PROVIDE FREE PRACTICAL, EMOTIONAL AND SOCIAL SUPPORT TO PEOPLE WITH CANCER, AS WELL AS THEIR FAMILY AND FRIENDS.



ON 23 SEPTEMBER, **GEMMA ANDERSON**, LEITHS IMS ASSISTANT, TOOK PART IN THE PRIME FOUR BANCHORY BEAST RACE, AN EPIC 10K OBSTACLE COURSE RACE ON THE BANKS OF KNOCKBURN LOCH, WHICH INVOLVED 30 MEGA HURDLES INCLUDING WATER SLIDES, ICY LOCH WATER SWIMS, THICK MUD CLIMBS AND SWAMP CROSSINGS. GEMMA'S NOMINATED CHARITY WAS CHEST HEART & STROKE SCOTLAND AND SHE RAISED OVER £200.00.



WELL DONE GUYS AND GALS!

A Day in the Life of . . .

David Rennie

Contracts Manager, C&S Division

I FIRST JOINED LEITHS IN MARCH 2007 INITIALLY AS A PROJECT MANAGER AND HAVE SINCE PROGRESSED TO THE ROLE OF CONTRACTS MANAGER WITHIN THE CIVIL ENGINEERING & SURFACING DIVISION.

The Civil Engineering department within the Aberdeen area has grown under my guidance over the last 3-4 years.

My day normally starts at 7:00am at Rigifa where the first order of the day is to review and reply to numerous e-mails from clients and colleagues. As a Contracts Manager, one of my main duties is to document and co-ordinate contractual correspondence between the company, our clients and third

parties such as utility companies and local Councils. Whilst this may be a day in the life of... I also have to attend weekly internal programming meetings and monthly internal cost/valuation reconciliation meetings.

Another of my main duties is to review construction drawings prior to ordering materials and programming the works. More often than not the drawings require clarification on specification or buildability which needs to be queried with the designer, quite often through a series of e-mails and technical queries.

Due to the everchanging nature of the civil engineering industry, I have many regular interfaces within all departments/disciplines at Rigifa but mainly Estimating, Quantity Surveyors, Purchasing and Transport.

I currently lead a team which includes a Site Manager and 8 separate crews with responsibility for all aspects of the

works from setting Health and Safety standards, Quality Control and ensuring the works are undertaken productively and within our commercial allowances. Planning and programming is key to ensure our targets are achieved along with a collaborative working relationship with our clients. This requires periodic site visits to monitor the works in hand and attend progress meetings with clients to ensure they are fully aware of how their project is developing. Getting out of the office and working with the crews is the better side of the job as there is nothing more satisfying than visibly seeing a plan coming to fruition.

My normal day never finishes at a normal time..! Despite this, I still find some spare time and like to get away hill walking throughout Scotland and am currently sitting on a tally of over 100 munros.



George Mathers Retires, after 40 years' service

GEORGE, OR GEORDIE AS HE'S KNOWN TO HIS FRIENDS AND COLLEAGUES, HAS WORKED FOR LEITHS FOR OVER 40 YEARS AND IS LEITHS 2ND LONGEST SERVING HGV DRIVER.

Geordie was an extremely experienced driver and will be a big loss to the team. In the words of one of his colleagues, "he is straight talking, no frills, often grumpy, always opinionated, and will be hugely missed by everyone".

George retired on 11 August 2017 following the presentation of his 40-year long service award. He ended his career on lorry LOR052 which will always be known now as Geordie's old lorry.

We wish Geordie all the very best in his retirement.



Geordie (left) being presented with his long service award by Ian Leith, Chairman



Geordie in one of his earliest lorries

Employees Successfully Complete First Year at University of Derby

DIANE HOUSLEY AND RICHARD JOHNSTON HAVE BOTH SUCCESSFULLY COMPLETED THE FIRST OF A THREE YEAR COURSE AT THE UNIVERSITY OF DERBY FOR A FOUNDATION DEGREE IN MINERAL EXTRACTIVE TECHNOLOGY.

Diane has been employed at Torrin Quarry on Skye since 2006 as Office Administrator & Batcher, while Richard is currently Manager at Midlairs Quarry.

The first year comprised three modules; Engineering 1, Industry Introduction and Mathematics. Coursework is distributed ten times per year for a combination of interactive and distance learning. Assignments are due for completion within three weeks. There are three scheduled training weekends at Derby followed by a fourth visit for examinations.

Diane and Richard comfortably passed the coursework and examination components of the course. Both report they are happy with the first year results, and are looking forward to the challenges of the second year.

This will consist of; Construction Products Technology, Engineering 2, Industry Technology, and Mineral Extraction & Transportation modules. Well done to both of them.



Diane Housley in Torrin Quarry



Richard Johnston at Midlairs

COMPETITION - Issue 9

To be in with a chance of winning **£100.00**, please tell us:

What is the name of the Overhead Cableway which John Fyfe invented for transporting granite blocks out of the quarries in Kemnay?

Entrants should send their answer, including name, place of work and contact details to:

Caroline Anderson (canderson@leiths-group.co.uk) by Friday, 8 December 2017.

The winner will be randomly picked from all correct entries and announced by Friday, 15 December 2017 and featured in the next edition of Leiths News.

Good Luck!

COMPETITION WINNER - Issue 8

Thanks to everyone who entered the last Leiths News Competition in Issue 8.

The competition gave employees an opportunity to win £100.00 by answering the following question:

What is the average age of the Leiths Group work force at April 2017? The answer was B: 45

The lucky draw winner was :

CORAL-ANN BIRNIE, CONTRACTS ADMINISTRATOR, BASED AT HEAD OFFICE IN COVE.

Well done Coral-Ann.

1 Leiths

Leiths (Scotland) Ltd
Rigifa, Cove, Aberdeen
Aberdeenshire AB12 3LR

Tel: 01224 876333
Fax: 01224 876332

4 Markon

Antonine House
6-10 Dunnswood Road
Wardpark South, Cumbernauld
Glasgow G67 3EN

Tel: 01236 875134
Fax: 01236 875525

2 Lawrie Demolition

Rigifa, Cove
Aberdeen
Aberdeenshire AB12 3LR

Tel: 01224 876333
Fax: 01224 876332

5 M&M Road Surfacing

9A Bankhead Medway
Sighthill Industrial Estate
Edinburgh
EH11 4BY

Tel: 0131 6244466
Fax: 0131 6244467

3 Joss

Joss (Aberdeen) Ltd
Parkhill, Dyce
Aberdeen AB21 7AT

Tel: 01224 774422
Fax: 01224 772444

6 Ross

A Ross & Sons Ltd
Daviot
Inverness
Inverness-shire IV2 6XN

Tel: 01463 772255
Fax: 01463 772321



Group Resources



1. Highland Lime

Torlundy, Fort William
Inverness-shire, PH33 6SQ

T: 01397 702227
F: 01397 702308

SERVICES (See Key)

A B E F J I K N O

2. Torrin Quarry

Leiths (Scotland) Ltd
Broadford
Isle of Skye, IV49 9BA

T: 01471 822265
F: 01471 822266

SERVICES (See Key)

A D F J K N

3. Kishorn Quarry

Nr Strathcarron
Ross-shire, IV54 8XF

T: 01471 822265
F: 01471 822266

SERVICES (See Key)

D F J N

4. Achilty Quarry

Leiths, Contin, Strathpeffer
Ross-shire, IV14 9EG

T: 01997 421122
F: 01997 421145

SERVICES (See Key)

C D F K R

KEY

A Agricultural Lime
B Animal Feed
C Asphalt Products
D Decorative Stone
E Filler
F Hardrock Quarry

5. Mid Lairgs Quarry

A Ross & Sons Ltd
Daviot, Inverness
Inverness-shire
IV2 6XN

T: 01463 772211
F: 01463 772321

SERVICES (See Key)

C D F J K N O

6. New Forres Quarry

Leiths (Scotland) Ltd
Rafford, Forres
Moray
IV36 2RQ

T: 01309 671188
F: 01309 671199

SERVICES (See Key)

C D F K N P

7. Bluehills Quarry

Leiths (Scotland) Ltd
Craigellachie
Moray
AB55 4BW

T: 03301 190627
F: 01340 820890

SERVICES (See Key)

C D F K N

8. Parkmore Quarry

Leiths (Scotland) Ltd
Dufftown, Keith
Moray, AB55 4DL

T: 01340 820200
F: 01340 820890

SERVICES (See Key)

A D F J R

9. Longside Concrete Plant

Faichfield, Longside
Peterhead, AB42 3ED

T: 01779 821466
F: 01779 821354

SERVICES (See Key)

J

10. Loch Hills Quarry

Joss (Aberdeen) Ltd
Parkhill, Dyce
Aberdeen, AB21 7AT

T: 01224 774422
F: 01224 772444

SERVICES (See Key)

C D G J K O

11. North Lasts Quarry

Leiths (Scotland) Ltd
Peterculter, Aberdeen
Aberdeenshire, AB14 0PE

T: 01224 732690
F: 01224 876332

SERVICES (See Key)

C D F K N

12. Nether Park Quarry

Joss (Aberdeen) Ltd
Drumoak, Banchory
Kincardineshire, AB31 5AD

T: 01224 660468
F: 01224 772444

SERVICES (See Key)

D O

13. Lochton Precast Concrete

Leiths (Scotland) Ltd
Slug Road, Durris
Banchory, AB31 6DD

T: 01330 844444
F: 01330 844417

SERVICES (See Key)

I J

14. Blackhills Quarry

Cove, Aberdeen
Aberdeenshire, AB12 3LR

T: 01224 897568
F: 01224 897590

SERVICES (See Key)

C D F J K N

15. Montrose Concrete Products

Leiths (Scotland) Ltd
Broomfield Industrial Estate
Montrose, DD10 8SY

T: 01674 677037
F: 01674 672809

SERVICES (See Key)

I J

16. Lugton Lime

Lugton
Kilmarnock
Ayrshire, KA3 4EB

T: 01505 850435
F: 01505 850590

SERVICES (See Key)

A F H K

17. Markon Office

Markon
Antonine House,
6-10 Dunnswood Road
Wardpark South
Cumbernauld
Glasgow, G67 3EN

T: 01236 875134
F: 01236 875525

SERVICES (See Key)

L M Q

18. M&M Road Surfacing

M&M Road Surfacing Ltd
9A Bankhead Medway
Sighthill Industrial Estate
Edinburgh, EH11 4BY

T: 0131 6244466
F: 0131 6244467

SERVICES (See Key)

P

19. Fyfe Glenrock

Academy Way
Colpy Road Industrial Estate
Oldmeldrum
Inverurie
AB51 0JZ

T: 01651 873873
F: 01651 873399

SERVICES (See Key)

S

20. Kishorn Port Ltd

Kishorn Base, Kishorn
Strathcarron, IV54 8XA

T: 01397 773 840
F: 01397 773 850

SERVICES

Dry Dock

Port & Harbour Services

Leiths News is published for employees, customers and colleagues of the Leiths Group and its associated companies by Leiths Scotland Ltd, Rigifa, Cove, Aberdeen, AB12 3LR.

If you have any stories for the next issues of Leiths News, please send them to: canderson@leiths-group.co.uk

Rigifa, Cove
Aberdeen AB12 3LR

T: 01224 876333

F: 01224 876332

www.leiths-group.co.uk

LEITHS
Built on Quality