

Issue 16, Spring/Summer 2022



# Leiths NEWS

The newsletter of Leiths (Scotland) Ltd

*Produced for our Employees, Customers and Colleagues.*

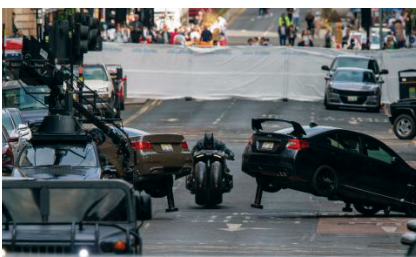
## INVESTMENT IN NEW PLANT



page 3

Also featured in this issue

### Hollywood comes to Glasgow



page 7

### Global Energy: Rising Costs



page 10

### The Life and Retirement of Allan Bruce, Fyfe Glenrock



page 17

**LEITHS**

Built on Quality

[www.leiths-group.co.uk](http://www.leiths-group.co.uk)

# Welcome to Leiths NEWS

## In this issue

New HITACHI Loading Shovel for Blackhills	p3
Blackhills Reserves Archaeology Works	p3
Development of Old Mill Quarry at Lugton	p4
Concrete Supply to the Macallan Overton Warehousing Complex	p4
Inverness Airport Station and Dalcross Area Enhancements	p5
Civil Engineering & Surfacing Update	p6
Hollywood comes to Glasgow!	p7
Fyfe Glenrock Supply and Install Denis Law Statue Base	p8
Gillian Martin MSP Visit to Fyfe Glenrock	p8
Leiths Innovations Recognised at the MPA Health and Safety Awards Scheme 2021	p9
Increased Energy Costs	p10
Lawrie Demolition Works	p10
Skye Stone Studio	p11
Health and Wellbeing Committee Update	p12
Leiths Supply Concrete to Community Hospital	p12
Glenfinnan Station Stone Supply	p13
Leiths Apprentices	p14
Employee News	p15
A day in the life of Elaine Rae, HSEQ Advisor	p16
The Life and Retirement of Allan Bruce	p17
Specsavers / Aberdeen Considine Employee Referral Scheme / Pension Scheme	p18
Fyfe Glenrock / Construction Worker Helpline	p19
Competition & Last Issue's Winner	p19

## Message from the Chairman



Having successfully brought our business through the worst of the Covid pandemic, we are now faced with new challenges as a result of the devastating conflict unfolding in Ukraine. The impact of the Russian invasion is having unparalleled effects on global markets. The cost of key commodities such as steel, hydrocarbon products and energy are spiraling to unprecedented levels. The effects are hard hitting both at a business level and at home as we have become accustomed to having our goods and services readily available and affordable.

Despite these arduous times, we continue to invest in new plant, equipment and mineral reserves which are essential to the continuity of our business. The recent success of securing planning permission for a limestone deposit in Ayrshire was welcome news and enhances our position as a supplier of quality limestone products.

This year we will be focusing on innovation as we look to develop new products which will have a lesser impact on the environment. Carbon reduction will be a key feature as we work hard to reduce our use of fuels, bitumen and cement whilst promoting more environmentally friendly alternatives. Our contracting division has continued with encouraging levels of work since our last Newsletter and has expanded into many new market areas.

The support from our employees to charities and the wider community continues. Our Wellbeing Committee recently organised the collection of food, toiletries, and basic medicines as donations for a local charity in Aberdeen for forwarding onto Ukraine.

It is encouraging to see our ongoing commitment to training and development. The annual intake of apprentices into the business continues and it is great to see our people grow and develop into fully qualified positions both in trade and managerial roles. Our business offers a wide array of professions to pursue with opportunities to progress a long and successful career.

Recognition at the recent MPA Health and Safety Awards for a number of initiatives was an excellent achievement. This further demonstrates not only our commitment to a safer working environment but the buy-in from our workforce at large.

I would like to thank Allan Bruce for his resolute 56 years' service within the natural stone industry as he retires from the Fyfe Glenrock business at the end of May.

And finally, I would like to thank you all for your continued support to our business and I look forward to exciting times ahead.

**Ian Leith**  
Chairman

### Get in Touch!

Leiths News is published for employees, customers and colleagues of the Leiths Group and its associated companies.

Leiths News will be published on a regular basis but we can only do this through the contributions of articles and features from our employees. If you have any comments, ideas for stories, or pictures for future issues, please get in touch.

I hope you enjoy this edition of Leiths News and thanks to everyone who has contributed so far.

**Caroline Anderson**, Editor

T: +44 (0)1224 293260

E: [canderson@leiths-group.co.uk](mailto:canderson@leiths-group.co.uk)

[www.leiths-group.co.uk](http://www.leiths-group.co.uk)





## NEW HITACHI LOADING SHOVEL FOR BLACKHILLS

**Blackhills Quarry has recently taken delivery of a brand new and powerful Hitachi ZW 370-6 Loading Shovel to replace a Volvo 220 G which George Stewart has driven at the quarry for the last nine years.**

George is extremely impressed with the new machine compared with the Volvo. He finds it better to sit in with its reduced noise level in the cab, with exceptionally good all round visibility, and it is a much more comfortable machine to operate as it has an air

suspended and heated seat, amongst other things. It also has the joystick steering system, along with the traditional steering wheel, which makes it easier to operate.

The lighting system is also much better which is an added safety point. There are several other safety features built in, including an extremely loud alarm if the seat belt is not properly engaged.

Its engine also complies with EU Stage 4, meaning that its emission levels are compliant with the current European recommendations.

The Hitachi is a terrific addition to the fleet at Blackhills and has already proved itself to the team onsite.

## Blackhills Reserves Archaeology Works

**In an earlier edition of Leiths News we mentioned that Leiths had been successful in securing planning permission from Aberdeenshire Council for an extension to our Blackhills Quarry. This extension will release another 6.5 million tonnes of rock which will keep the quarry and the associated Asphalt and Concrete Plants going for many years to come.**

Preparatory works are now underway to allow quarry operations to move into that extension. The planning permission required an archaeological trial trenching survey to be carried out to find any archaeological or historic remains. This work was done in October 2021 by Murray Archaeological Services assisted by our own Willie McLeod.

Despite over 4km in length of trenches being dug, the only items of interest discovered were a prehistoric flint tool/knife and evidence of historic 'rig and furrow' agriculture. Arrangements are currently in hand with SSE to move two electricity lines which cross the extension land out of the way. We've also been working with Network Rail to ensure that, when blasting operations take place within the extension, measures are in place to avoid any impact on the nearby railway line.

All being well, quarrying operations within the extension area are planned to start later this year.



Blackhills Reserves Archaeology Works



## DEVELOPMENT OF OLD MILL QUARRY AT LUGTON

It's been a busy time for the team at Lugton following a muck shift at Old Mill quarry at the end of 2021. Contractors were used to strip a field, the first blast site of the new production area was cleared and then drilled before Christmas ready for blasting in early 2022. There were a number of water issues with the new site and two pumps were hired in to deal with flooding over Christmas.

As it was the first blast on the new development, it was challenging as there was no open face to blast and, with 124 holes to fire, it had to be carefully planned for safety and environmental reasons. The blast used 12,590 kg of a pumped emulsion explosive which required two trucks from the EPC Glasgow depot, and it produced 46,610t of material. Weather conditions on the day made access for the trucks difficult but the teams from BAM Ritchie and EPC did an excellent job to get the shot fired.



The Alf Mill at Lugton was recently overhauled and upgraded to a more modern system which will improve efficiency and extend the life of the roll heads and will reduce maintenance needs and costs going forward.

A new lubricator for the refurbished gearbox was added as was a new purge fan for the roll heads. All internal components were replaced, and four groups of contractors participated in the two-week project. Specialist plant was hired in because of the height issues and restricted space in the Mill house. A city crane was hired from Stoddart's to remove the heavy gearbox from the top of the mill and a long reach MEWP was needed to remove the old ducting from the top of the mill classifier.

The project lasted two weeks, and the planning of the work meant that more than one group of contractors could work on the mill at any time. Regular briefings with the contractors meant that the health and safety elements were well managed and there were no accidents or near miss reports made as everyone involved on any day were always aware of the planned works.



Before Refurbishment



After Refurbishment

## Concrete Supply to the Macallan Overton Warehousing Complex

The initial development at Overton commenced in 2007 and, in 2015, a further phase was instructed to increase the warehousing capacity on the site. When complete, the development will accommodate sixteen 6,000 square meter warehouses, each warehouse having 3 cells of 2,000 square meters.

This large complex of buildings has been built on arable farmland above Aberlour and has involved one of the largest earthworks operations Scotland has seen in recent years. Over 1,500,000m<sup>3</sup> of soil has been moved in a cut/fill exercise to create the necessary development platforms.

Following the supply of 3,700m<sup>3</sup> of concrete for the Cask Storage Warehouses in 2017 and 4,500m<sup>3</sup> in 2019, Leiths ready-mix trucks have again been a familiar sight at the Macallan Overton Warehousing Complex supplying concrete to Phase 7 and 8. From April to November 2021, Parkmore successfully supplied a further 6,400m<sup>3</sup> to Malin Industrial Concrete Floors for Warehouses 55 - 58.

Parkmore Concrete Plant commenced supply of a C32/40 internal flooring concrete in April 2021 supplying a series 200m<sup>3</sup> + pours with each warehouse accommodating racking for 50,000 casks.

In addition to the internal flooring concrete, Parkmore also supplied C32/40 Air Entrained for 8,500 squared meters of concrete roads, with the last concrete supplied in November 2021.

Malin Industrial Concrete Floors have continued to work with Leiths since 2017 at Overton due to the excellent service that has been provided from our Parkmore Concrete Plant. The close proximity of the Concrete Plant



## INVERNESS AIRPORT STATION AND DALCROSS AREA ENHANCEMENTS

A. ROSS & SONS LTD HAVE RECENTLY SUPPLIED OVER 28,000 TONNES OF QUARRY MATERIALS FROM MIDLAIRGS QUARRY TO THE DALCROSS RAILWAY PROJECT.

BAM Nuttall were appointed as Principal Contractors under the Construction [Design and Management] Regulations 2007, to deliver the £170m first phase of the 108 mile long project on behalf of Network Rail.

New stations, some 16 miles of double track and extended platforms, will all be introduced on the Aberdeen-to-Inverness railway line. Rebuilding of track between Aberdeen and Inverurie, including signalling enhancements, platform extensions at Elgin and Inverurie, the relocation of Forres Station, infrastructure and new stations at Dalcross and Kintore.

This essential programme of works will improve connectivity between the major cities of Aberdeen and Inverness, with wider enhancements for the local communities in the north of Scotland. The Aberdeen to Inverness project is part of the Highland Enhancement Project (HEP), a framework of improvements throughout the Highland rail network.

Ross have been involved in the development of a new two platform station (with step-free access via footbridge with lifts) adjacent to the Airport. Work includes a new double track loop through the station and closure of Dalcross level crossing. The works also has associated parking, road alterations, railway access points, a permanent compound and a new footbridge close to Dalcross level crossing. The existing masonry arch overbridge to the east of the site is proposed to be removed.



To date Ross have supplied over 28k tonnes of quarry materials from Midlaigs Quarry which, at its peak, was supplied at over 1,000t per day and included crusher runs, fill materials, and pipe bedding.

We also received an order for supply of approved track ballast direct to Network Rail and supplied a total of 6500t over a 2 week period from our New Forres Quarry.



and locally available high quality limestone aggregates produces an excellent concrete for finishing.

Since 2017, Parkmore Concrete Plant has successfully supplied over 14,600m<sup>3</sup> of concrete to this contract.

The Macallan may be a favourite tipple for many, however the staff at Malin Industrial Concrete Floors must surely prefer a Parkmore!





# CIVIL ENGINEERING & SURFACING UPDATE

LEITHS CIVIL ENGINEERING AND SURFACING DIVISION HAVE ENJOYED A BUSY START TO THE YEAR CONTINUING FROM AN EXCELLENT 2021.

SOME OF THE EXCITING NEW PROJECTS INVOLVING CLIENTS CALA, KCR AND LAGAN AVIATION ARE HIGHLIGHTED BELOW.

## CALA

Leiths C&S division have started works at the Craibstone Estate, Aberdeen, for CALA homes. The works valuing in excess of £1m largely concentrate on completion of the spine road linking the existing infrastructure to the new housing development. The 2km of carriageway and associated footpaths requires 10,000T of bituminous material.

Our civils department has also completed utilities, streetlighting, kerbing, ducting, drainage, ironwork, block paving and landscaping for the site.

Photos show a link road to the new houses and the paviour drive to the first occupied house.



## KCR

The division has also recently commenced a new partnership with KCR, a maintenance company based in the Central belt, to completely resurface eight Tesco Superstores throughout Scotland.

Works have been completed on the first two at Costorphine, Edinburgh and Paisley. Remaining stores will take us as far as Oban in the West to Inverness in the Highlands and see the surfacing squads lay some 15,000 tonnes of bituminous material.

KCR have been delighted with Leith's ability to manage the milling, surfacing, and lining in-house allowing for the works to be completed ahead of the scheduled programmes.

## LAGAN AVIATION

Our north surfacing squads continue to be ever present at RAF Lossiemouth now working with Lagan Aviation to complete all the surfacing reinstatements for trackwork and new roads associated with the major drainage project currently being carried out.

Other works include for Robertsons Construction at the new SLA station headquarters as well as our normal maintenance contract now with MITIE Future Defence Infrastructure Services.

## NEW PAVER

The Surfacing division are delighted to receive a new Volvo paver.

The P8270D model with a range from 1.8m – 3.5m is ideal for footpaths, cycleways, smaller roads and will complement our existing larger Volvo pavers in the fleet. The Volvo replaces the Bitelli BB730 which is fair to say has done its time!



Operator Darren Bryden takes delivery of the new Volvo.



# HOLLYWOOD COMES TO GLASGOW!

OVER THE LAST FIVE YEARS MARKON'S TRAFFIC MANAGEMENT DIVISION HAS BEEN PART OF SEVERAL HIGH-PROFILE HOLLYWOOD FEATURE FILMS SUCH AS FAST & FURIOUS, HOBBS & SHAW AND TETRIS, AS WELL AS TV SERIES SUCH AS THE AWARD-WINNING BBC DRAMA VIGIL, AND BRITBOX'S THRILLER CRIME.

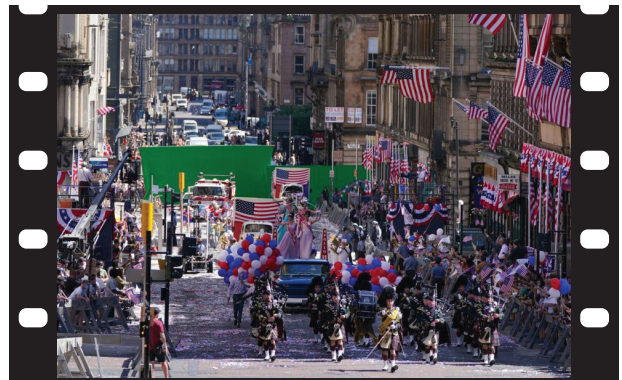
The last 10 months has seen a further increase for the division's filming portfolio with some of Hollywood's elite productions such as Disney and Warner Brothers employing the division to facilitate filming within Glasgow City Centre.

In June 2021, Walt Disney Pictures commenced production of the new Indiana Jones 5 movie which saw parts of the city transformed into 1960s New York as Apollo astronauts return home, and resulted in approximately two months' worth of works for street prep and shooting.

These works also had an overlap in July with filming for Warner Brothers who also started production on their feature film, The Flash. This production was primarily stunt based which saw regular high speed chases including scenes involving Batman.

Having two major productions on at the same time was extremely challenging as they are extremely fluid and requirements changed almost daily.

Having successfully delivered these two major filming productions, Warner Brothers subsequently brought the division onboard for their next production within the city, Bat Girl. This was the biggest and longest production to ever film in Glasgow with production commencing in November 2021 and only just wrapping at the end of March 2022. This involved over 40 locations, some with multiple visits.



Walt Disney Pictures filming in Glasgow for Indiana Jones 5



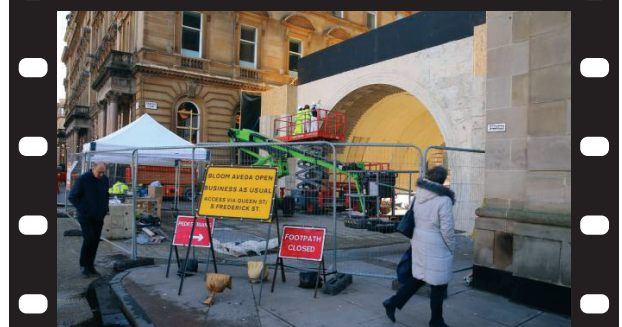
Walt Disney Pictures filming in Glasgow for Indiana Jones 5



Warner Brothers filming in Glasgow for The Flash, featuring Batman



Warner Brothers filming in Glasgow for The Flash, featuring Batman



Traffic Management in place in Glasgow City Centre for the filming of feature film, Bat Girl



## FYFE GLENROCK SUPPLY AND INSTALL DENIS LAW STATUE BASE

18 NOVEMBER 2021 SAW THE UNVEILING OF THE DENIS LAW STATUE AT MARISCHAL SQUARE IN ABERDEEN.

Alan Heriot (a long-standing customer of Fyfe Glenrock) created the bronze sculpture and approached Fyfe Glenrock to manufacture a granite plinth and sub-base for the sculpture. Alan Heriot wished to use a light grey granite similar to local Kemnay Grey granite that was used for another of his sculptures – King Robert The Bruce – outside Marischal College.

We opted for a granite from Portugal (Pedras Salgadas, known commercially as Norden Grey) – a reasonably close match for Kemnay Grey granite, but readily available in large blocks without veins or fractures. The two sections of granite were precisely manufactured to ensure that the sculpture base plate would fit exactly onto the granite plinth.

The plinth and base were given a sandblasted surface finish and then inscribed with a black painted text to the four sides of the base with details of his career – Denis Law is Scotland's joint record goal scorer and is the only Scottish player to win The Ballon d'Or.

Leiths Civil Engineering and Surfacing division prepared the area near Provost Skene's House where the statue was to be placed. Due to the weight of the bronze and granite, the exact location had to be carefully selected to avoid damage to the nearby underground car park.

Fyfe Glenrock operatives were on hand to ensure that, firstly the granite base and plinth were installed correctly, and that the sculpture cast by Powderhall Bronze in Edinburgh fitted perfectly.

David Suttie of The Denis Law Legacy Trust said "The feedback from Denis and his family was extremely positive and, indeed, there has been nothing but positive comments – it's a great job all round and your assistance was really appreciated".



## Gillian Martin MSP Visit to Fyfe Glenrock

**As part of Scottish Apprenticeship Week 2022, Fyfe Glenrock welcomed Gillian Martin MSP to their Oldmeldrum factory on Friday 11 March 2022.**

Gillian is a member of the cross-party group in the Scottish Parliament on Skills.

Gillian was accompanied by her office assistant, Jim Ritchie (Skills Development Scotland), and Amin Benam (Technical Academy Scotland), the latter being responsible for delivering the SVQ Training Courses in Occupational Work Supervision and Stonemasonry currently running for 11 of the factory operatives in Oldmeldrum.

Gillian was very impressed with what she saw in the factory and spent some time talking to our 3 apprentices, Lewis Webster, Sandy Stewart and Keiran Shaw.



L to R: Jim Ritchie (Skills Investment Adviser, Skills Development Scotland); Gillian Martin MSP; Keiran Shaw (Apprentice Granite Worker); Lewis Webster (Apprentice Granite Worker); Sandy Stewart (Apprentice Granite Worker)



# Leiths Innovations Recognised at the MPA Health and Safety Awards Scheme 2021

LEITHS ENTERED THREE CATEGORIES OF THE ANNUAL MINERAL PRODUCTS ASSOCIATION IN APRIL 2021, THE CATEGORIES ENTERED WERE:

## SAFER PRODUCTION

This section covers **extraction, manufacturing and processing**. The entries to this category should describe a new innovation, engineering solution, system, control measure, warning system or training programme that has made manufacturing or processing safer.

Our entry of a safe **ACCESS PLATFORM** came following a near miss which was raised at Lugton Lime when it became apparent that Drivers were accessing the top of their powder tankers on a platform with limited protection.

The innovation came as a result of consultation with Site Personnel and the Drivers to eliminate the risk of falls from height and carry out the work from ground level. The resulting innovation was a series of ground operated pulleys and switches allowing for hatches and feed socks to be operated from the ground.

**This innovation was awarded a Certificate of Merit.**

## SAFER MANAGEMENT OF PEDESTRIANS AND TRANSPORT ONSITE

This section covers the management of people and vehicles onsite. The entries to this section can include site inductions, traffic management, pedestrian zones and control systems on site.

Our entry of the **RED WARNING BEACON** on Excavators was submitted following feedback from excavator operators on personnel approaching plant whilst the plant was in operation.

The system involves fitting a red flashing beacon to the excavator which will flash when the machine is in use but will cease flashing once the control isolator has been engaged. This renders the controls inoperable and in conjunction with good levels of communication signifies that the pedestrian can approach the excavator safely.

**This innovation was awarded a Certificate of Merit.**

## SAFER TOGETHER

This section emphasises working together, leadership or behavioural change. It can include training programmes, safety days, communication programmes, site safety audits or similar initiatives.

Our submission was the **QR Code Use – Near Miss Reporting** system which we implemented in January 2021.

The system was born out of the QR code use which we put in place during the COVID pandemic.

Although there was an existing system for near miss reporting we felt that having a universal system accessed through a smartphone would make reporting easier.

The result has seen up to 77% of incidents and near misses reported using this QR code system.

**This innovation was awarded a Certificate of Merit.**



## INDIVIDUAL RECOGNITION AWARD FOR EXCEPTIONAL PERSONAL CONTRIBUTION TO HEALTH AND SAFETY

This category recognises where people have gone "above and beyond" in their approach to keeping them and others safe onsite.

Michael Grant was nominated for this award following his work at Bluehill Quarry which had seen several innovations realised and put into practice.

**Although this is an extremely competitive category Michael was awarded an Individual Recognition Award.**

We consider the award of these certificates as a great success for Leiths and would encourage you to put your ideas forward to [HSEQ@leiths-group.co.uk](mailto:HSEQ@leiths-group.co.uk) or contact one of the team to discuss your ideas.



# INCREASED ENERGY COSTS

Over the past few months, you will have seen your energy costs increasing at home unless you have a fixed rate tariff – unfortunately, both individuals and business have been experiencing energy supply increases this year.

There was a price spike in April 2022 for households regulated by Ofgem which is raising the price cap by 54% but, unlike residential households, businesses on commercial energy tariffs are not protected by any price cap and tariff prices have been rising in reaction to the spike in wholesale energy prices around the globe.

We have seen our energy costs increase significantly for our core energy streams:

- Diesel has increased by 28% since the end of 2021
- Electricity has increased by 300% since October 2021

These increases have a direct impact on how profitable the company is and they also have a knock-on effect on our operations with supply issues as demand grows.

Behind the scenes, there is a lot of work and effort put in to energy reduction schemes and initiatives, and while this is not completely evident to the wider audience, it is an essential part of the Group's activities and has a significant bearing on the performance of the Group.

The Group registered to the International Standard - ISO 50001 in 2015 to comply with the Energy Savings Opportunity Scheme (ESOS) which became law in 2014, since then the significant energy processes and activities have been monitored and measured to improve and reduce the Group's energy footprint.



Driving improvements can be challenging but the HSEQ team have been working closely with the Production team to reduce energy use in specific areas of the Group's activities.

- Bitumen storage temperatures have been reduced across the asphalt plants with the heating of tanks being timed thus reducing the need for heating to run in excess of the temperature requirements.
- Sub metering has been implemented and will allow for more in-depth analysis of site energy use and reductions going forward.
- Covered Aggregate Storage is currently being assessed to reduce the amount of burner fuel used for heating aggregates as part of asphalt production.
- Warm Mixes are being investigated as this will reduce the higher energy use currently required for production of asphalt.

We all want the company to succeed and be profitable and, while we can tackle high level savings, we rely on you, our employees, to do your bit in helping us reduce our energy consumption.

This can be something as simple as turning down a heater in a canteen to revisiting our operations and looking for ways to make our activities more efficient.

There really is no action too small when it comes to saving energy.

## Lawrie Demolition Works at Mrs Murray's Cat and Dog Home

As part of the expansion works at Mrs Murray's Cat and Dog Home in Aberdeen, Lawrie Demolition were awarded the contract to demolish the former house and offices.

The buildings were stripped out prior to demolition then mechanically demolished to the floor slab. The slab was then lifted to allow for the new construction works. All brick/block and concrete were removed to our Lochhills Quarry in Dyce, Aberdeen, for recycling with all other available materials segregated and removed to various waste streams for further recycling.

The works were completed within budget and programme with a 98% recycle rate for materials removed from site.





# Skye Stone Studio

**Joel Franklyn, founder of Skye Stone Studio, creates Terrazzo from Skye Marble from our Torrin Quarry on the Isle of Skye.**

Here, Joel tells us how it all came about.

"The idea of making terrazzo came to me when I was renovating a house and needed a fire surround. It's an old cottage, modernised quite simply, so I wanted to add a little impact with an interesting feature, but nothing heavy or too ornate which would dominate the space.

"On a break outside, I was looking at the Skye Marble chips on the drive, and the idea to make terrazzo struck. I gave it a try, making three blocks, using 20mm Skye Marble aggregate chips which I then ground and polished. As a first go the result was great, and I realised then what a versatile material terrazzo could be.

"What was particularly pleasing was it allowed me to use Skye Marble, an historic local stone in decorative, architectural and structural ways that one is not able to as the quarry does not produce dimensional stone. Having worked with the quarry for many years, the team were excited about my experimentation and have facilitated and supported me all the way.

"I became a stonemason after working in building conservation, doing an apprenticeship relatively late. My mother was an artist, my father an antique dealer and I'd studied art and material design at college, so, design has always been a big part of my life. I have always had the urge to innovate, make things and problem solve. On a few projects I'd collaborated with architects on interior features producing stone furniture and fittings, but there is a limit to what is viable with dimensional stone. With a little thought terrazzo is incredibly versatile, technologically and aesthetically.

"The use of terrazzo goes back millennia with 15th Century Venetian craftsmen resurrecting its use using up marble scraps to create hard and durable flooring. It's now become a ubiquitous material; if you look down in a municipal building, supermarket, or airport the flooring will most likely be terrazzo. From the design perspective the potential of terrazzo is vast; change the binder, the chip type, size and density, selecting differing palettes of aggregate stone, adding glass, shell, or dye and polishing to different degrees: all these factors change the character of the product which is a gift for designers and architects looking for bespoke products.

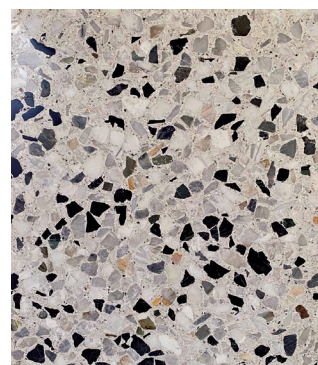
"Its use doesn't stop at flooring and worktops, I've been designing and forming all sorts of other objects using terrazzo; from basins, baths, columns, and walls for instance. Another innovation I have been trialling is using quarries local to commissions which bring the local geology and topography into a client's house in the form of terrazzo. It's such an exciting material and the possibilities are enormous.

"It's still early days, I've invested in a workshop and machinery and there is a lot of interest coming in from architects locally and further afield. I am hopeful that I can continue to work with Leiths not just on Skye but at many of their other sites."

We wish Joel all the best in his future projects.



Duisdale Fireplace



Skye Marble Samples



Torrin Quarry on the Strathaird Peninsular on Isle of Skye

## HEALTH AND WELLBEING COMMITTEE UPDATE



The Rigifa Health and Wellbeing Committee welcomed new members earlier this year – Chloe McAllister, Lab Technician and Les Ogilvy, one of our Drivers, which gives a broader demographic to the team going forward.

### Current Members:

Pat Dunlop, Group HR Advisor  
Sam Leith, Company Secretary  
Caroline Anderson, PA to CEO and Chairman  
Ross Cameron, IMS Assistant  
Chloe McAllister, Lab Technician  
Les Ogilvy, Driver

If you are interested in joining the Committee, please contact Caroline Anderson by email – [canderson@leiths-group.co.uk](mailto:canderson@leiths-group.co.uk).

And remember, you don't need to be based at Rigifa to be part of the team – with video conferencing and TEAMS now available, you can join from anywhere you have an internet connection!

### Charity Support

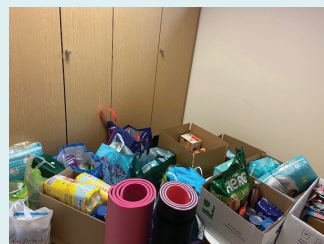
As we highlighted in the last edition of Leiths News, we were hoping to choose a new Charity to sponsor for 2022. Due to the ongoing crisis in Ukraine, we have been supporting local humanitarian efforts, including Own Women and the Polish Association Aberdeen.

We collected donations of food, toiletries and medical supplies for a local team of volunteers from the Polish Association doing amazing work at Craigievar House in Dyce, who were taking a truck to the Poland/Ukraine border at the beginning of April.

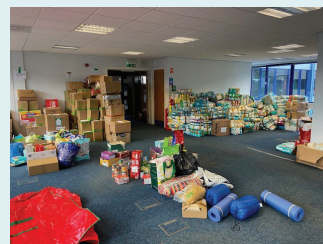
We will continue to support local Charities with their humanitarian efforts over the coming weeks and months, and will look at a new Charity by employee vote later in the year.

The Health and Wellbeing Committee, along with support from Senior Management, will continue to look at ways in which we can promote new initiatives, create and maintain a safe and healthy work environment, and support wellness for our staff.

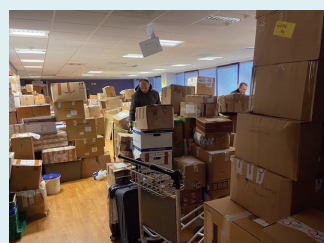
Look out for our next Campaign in June – Men's Health Week.



Donations collected at Rigifa



Our donations at the Warehouse in Dyce



Just some of the donations provided by generous local businesses – boxed, labelled and ready to head to Poland and Ukraine.



Kacha (wearing the pink jacket) – one of the main organisers who is working alongside a brilliant team of volunteers.

## Leiths Supply Concrete to Community Hospital

### WORK HAS NOW COMPLETED ON THE NEW BROADFORD HOSPITAL ON SKYE AND THE BUILDING HANDED OVER TO NHS HIGHLAND.

The successful completion of the 24-bed hospital, which opened on 8 March 2022, follows the handover of the Badenoch and Strathspey Community Hospital in Aviemore in September, in a £40 million hub North Scotland development on behalf of NHS Highland.

The main contractor for both hospitals was Balfour Beatty, with Leiths supplying most of the concrete for Broadfold Hospital, from their Torrin Quarry in Skye. In fact, it was this project that allowed the Quarry to re-open after the first lockdown. Towards the end of the project, Leiths Surfacing Division surfaced the roadways, roundabout and pathways.

In addition to 24 ensuite in-patient rooms, the new Broadford Hospital has a range of services including a midwife-led community maternity unit, an accident and emergency unit, an X-ray/ultrasound unit, and an infusion suite. There will also be Physiotherapy and Occupational Therapy, Chemotherapy, Renal Dialysis, and a Scottish Ambulance Service base.

The new hospital is in a stunning location on the shore of Broadford Bay, between the current Dr Mackinnon Memorial Hospital and the Broadford Medical Centre.

During construction, the Broadford works created seven new jobs and saw two newly qualified graduates employed. Two new apprentices began their careers on the site and the project provided work for 13 existing apprentices.



Broadfold Hospital, Isle of Skye



Surfacing carried out by Leiths, at the rear of the hospital



# GLENFINNAN STATION STONE SUPPLY



**Glenfinnan Station at the Glenfinnan Estate, owned by our Chairman, Ian Leith, is a picturesque and tranquil heritage site celebrating the life and work of earlier generations on the West Highland Line. Still a working railway station, the site offers a unique and hands-on introduction to West Highland railway heritage.**

Following the arrival of the West Highland Railway into Fort William in 1894, a movement to further develop the area, and, in particular, to establish an important fishing harbour at Mallaig, resulted in the Mallaig Extension being opened in 1901.

Glenfinnan Station formally opened to the public in April 1901 and continues to this day to serve the community as well as the large numbers of tourists who now visit the area each year.

Following the decline of rail travel in the 1960s and the inevitable rise of the motor car, the whole line was threatened with closure under the Beeching Proposals. Fortunately, the reprieve was swift but the downstream effect of cost savings led to mass redundancies and the potential dereliction of stations.

To save the buildings, Glenfinnan Station Museum was set up in 1991 and now stands as a tribute to those far-sighted people who made this possible. The Museum seeks to tell the story of the West Highland Railway, its construction and development.

The Museum is run by a local charitable Trust supported by volunteers from Friends of Glenfinnan Station. The Friends Association is always interested in encouraging new members.

This year a new addition to the Glenfinnan station museum will be the miniature railway. Currently, earth works to create the infrastructure to support a 7¼" gauge railway is nearing completion. The 165-metre-long route of the line, generally on an embankment, encounters bridges and a three-arch viaduct which spans a burn.

A locomotive and rolling stock shed has been constructed which will have two roads into it, plus an external siding which will extend past the shed to a loading/unloading ramp giving access for visiting locomotives.

The line itself will be constructed with steel rail, sleepers and ballast – joining the shed and loading ramp siding there will be a turntable which gives access to two roads – the platform road and a locomotive release road or run-round. Another turntable at the far end of the line will repeat the platform and locomotive release arrangement. At the mid-point of the line will be a passing loop. Spring points will be set for left hand running as used at Glenfinnan.

Track laying is commencing soon, and an appeal has gone out for volunteer 'Navvies' to assist – it may even be possible for such volunteers to stay in the onsite camping coach, a better spot overlooking Loch Shiel will be hard to find. There's also an excellent Buffet coach where delicious food and drink can be purchased to sustain the volunteers or visitors during the day.

In 2009 to 2013 the Museum undertook a major upgrade of its museum and visitor facilities supported by the Heritage Lottery Fund, the Railway Heritage Trust, Historic Scotland, Highlands and Islands Enterprise, LEADER, the Robertson Trust, the Manifold Trust, Friends of the West Highland Lines, Friends of Glenfinnan Station, Highland Railway Heritage, the Scottish Government and the European Agricultural Fund for Rural Development.

The indoor exhibition provides interesting facts and stories about the spectacular Glenfinnan Viaduct and life on the West Highland, while the outdoor exhibits tell the story of a rural Scottish railway station over the last century.

- Visit the Museum Exhibition to find out how the spectacular railway from Glasgow to Mallaig was built and learn about the men who built it
- Enjoy the lovingly restored Signal Box and its heritage film studio
- Delve into the railway toy chest in the Booking Office
- Visit the restored Dining Car for scrumptious home baking or a light lunch
- Stay in the restored Sleeping Car overnight
- Visit the Gift Shop
- Enjoy the Woodland, Viaduct and Village Walks
- Book a guided tour of the heritage site

# LEITHS APPRENTICES

**This edition, we are shining the spotlight on our young apprentices.**

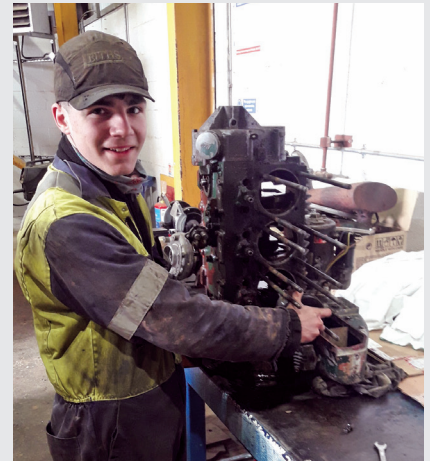
One of the main benefits of an apprenticeship is that it combines a new career path with part-time learning.

We are very proud of our young workforce and their commitment to their future.

## PLANT

**Dylan Smith** started his apprenticeship at Leiths in June 2021. Based at Rigifa, he has been mostly shadowing Kyle Maitland, Plant Fitter, learning everyday maintenance tasks, from servicing to onsite breakdowns.

Dylan is currently working on an engine rebuild project of a Lister TR3 engine from a mobile water pump which will give him invaluable skills for future years.



Dylan Smith



Fraser Grigor

**Fraser Grigor** started his apprenticeship in July 2021 and has been learning and following in the footsteps of Alan Garson (North Chargehand), learning everyday maintenance tasks from servicing to onsite breakdowns, alongside mobile plant and fixed asphalt and concrete plants.

Fraser has come from a mechanical background with his father, and jumped straight into tasks required, with the guidance of Alan.

The day the picture was taken, Fraser and Alan were dealing with an electrical fault at Midlairs Quarry, stopping the machine from running, fault finding with electrical testing, identifying the fault and ordering parts.

Both Dylan and Fraser will be attending CITB College this September in Glasgow to progress their skills in both theory and practical which will be spread over 2 years in block release.

## FABRICATION

Reporting to Jim Stables, our Fabrication Workshop Foreman at Rigifa, the following are currently serving their apprenticeships in Aberdeen:

**Liam Grant** and **Layton Hutcheon** are 1st year apprentices – attending Tullos Training, learning engineering and system skills with core skills in communication, numeracy and information technology, in addition to National Certificate Training at SCQF Level 5.

**Jack Goudie** and **Darren Black** are 3rd year apprentices – both currently in the process of completing their SVQ Level 3 in Engineering.

**Max Fowlie** has completed his SVQ Level 3 and is now a skilled worker, working full-time at Rigifa as a time served apprentice in Engineering.



Darren Black



Layton Hutcheon



Jack Goudie



Liam Grant



Max Fowlie

### Civil Engineering and Surfacing

Our Civils Department are looking for enthusiastic local apprentices to start a course in Construction. The Apprentices will be trained both by our experienced Foreman on site and partly college based. If you have any friends or relatives who may be suitable please ask them to apply.



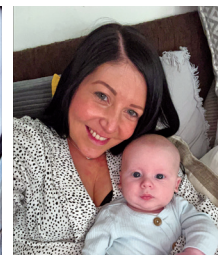
## LEITHS BABIES!

### IRENE JAMIESON

Distribution Supervisor at Rigifa, gave birth to a beautiful baby boy in December.

Zac Bias was born on 20 December 2021 at 3.04pm weighing 7lbs 14 oz. Irene and her partner, Graham, are settling into family life very well and Zac is a happy smiley baby – as can be seen in the photos.

Irene commented, "I'm enjoying maternity leave spending time with Zac and being a mummy. I am missing all my colleagues/customers at work though, especially after 11 years of working with Leiths, and can't wait to see you all soon!"



### SCOTT WILLISHER

Our Technical Supervisor at Rigifa, also became a father in March, after his wife gave birth to Madeleine Chernouski Willsher on 5 March. Baby Madeleine weighed 5lbs 13oz and both mum and baby are doing very well.

**Congratulations to the happy parents!**

## DIANE HOUSLEY PROMOTED TO QUARRY MANAGER



Diane Housley has received a well earned promotion to Quarry Manager at Torrin, effective from 14 February this year.

Diane's career with Leiths dates back to 2006 when she and her husband Martin moved from Sheffield to the Isle of Skye, looking for a better way of life.

Martin secured a driving position with the Quarry in February 2006 followed by Diane starting on the Weighbridge in May 2006.

Diane progressed to Office Administrator and then took on the additional duties as RMC Batcher. Diane credits a significant part her ability to progress to the numerous and varied training courses Leiths put her on through the years, culminating in the opportunity to do the Derby University Degree in Mineral Extractives Technology. She graduated with Distinction in 2019 and was promoted to Assistant Quarry Manager.

Dave Bremner, Group HSEQ Director, who has known Diane throughout her Leiths career, commented, "Diane was, in my view, always a very good prospect and I hope she will be given the opportunity to flourish as this new breed of Quarry Managers takes the industry forward"

Diane likes to spend her free time at the weekends going out for long walks with her Rottweiler, Stela.

## Mark Robinson Steps Up For Charity Walking Challenge



Mark Robinson, one of Leiths Plant Operators, continues his quest to raise vital funds for his chosen charities, The Archie Foundation in Aberdeenshire and Great Ormond Street Hospital in London, both of which are close to his heart.

As we reported in the last edition of Leiths News, Mark had set himself up for yet another challenge of walking at least five million steps in 12 months. Starting in July

2021, the event began at Butlins Skegness and will finish there in July this year.

At the time of writing the article, Mark has already passed the amazing target already set and is now looking to achieve at least 8,000,000 steps by the 19 July deadline. This included a full-day of walking on the May Day Bank Holiday, adding a further 100,000 steps to the total.

Mark commented, "I've been working hard to get the steps in. I've no blisters so far and the weight loss means I've gone down four holes in my belt."

"We arrive for our holiday in Skegness eight days before the event end. I hope to have beaten my target by then but will do a couple of circuits of the camp (1.5 miles) before breakfast and have 10,000 steps done before my family are up and add another 20,000+ per day."

"Butlin's and I are hoping to have the regional TV and media on resort as I finish my walk, then it's time for a Heineken and relax!"

**We wish Mark all the best in achieving this fantastic milestone!**



**GREAT  
ORMOND  
STREET  
HOSPITAL  
CHARITY**



**THE ARCHIE  
FOUNDATION**  
MAKING THE DIFFERENCE  
FOR LOCAL SICK CHILDREN

## WATTIE RAE

We reflected 12 months on following the sad passing of Wattie Rae on 12 March 2021 at Blackhills Quarry.

Wattie's family sent flowers for placing at Blackhills Quarry as a poignant mark of remembrance.



# A day in the life of ELAINE RAE, HSEQ Advisor



In my role as HSEQ Advisor, every day is different. I will either start my day at 8:00am in my office at Markon answering emails, completing reports etc. Or hit the road, from home, between 5:00am and 6:00am if I'm heading straight out to site.

## Places I visit regularly

The crews I visit most frequently are Markon road crews around the Central Belt and in Inverness and Aberdeen. I've also enjoyed meeting some of the Civils and Surfacing crews both when they have travelled to Edinburgh and in their natural habitat of Aberdeen.

Since joining Leiths last September, I've also enjoyed regular visits to Lugton and Fort William and never fail to be surprised at the continuous changes and improvements. I've now visited most of our quarries and look forward to seeing New Forres, Kishorn and Torrin very soon. I could never have imagined the diversity of the landscape and wildlife or quite how beautiful a quarry could be before taking up this post.

I'll pay my first visits to our Precast sites this month and hopefully our Demolition crews and Stonemasons in the not too distant future.

## People I deal with regularly

My fellow HSEQ team members, Dave Bremner as H&S Director, and Ross Cameron looking after IMM, are invaluable! Being a newcomer to most of our industries I've greatly benefitted from their generosity of knowledge and can always rely on them at the end of the phone or as a friendly face on Teams.

The most familiar faces are the Management and Admin team at Markon; I've had a warm welcome and everyone has been very generous with their time and knowledge. The Markon crews always make me feel right at home on site too – the skill involved is always fascinating to witness; from the most seasoned foremen to our newest trainees, the outlook is always positive, pride in their work evident and safety always considered.

I liaise with some of Markon's clients; this can be anything from chatting with Site Agents onsite to forwarding updated documents to attending their own inhouse training.

I also assist in looking after Markon's accreditations, hosting the BBA auditor earlier this year with Scott Darling and Dave Bremner and keeping on top of our SiPPs portals whilst relying heavily on Ross's input.

The management team and crews for Civils and Surfacing couldn't be more helpful with scheduling visits and their crews knowledgeable, skilled, friendly and most importantly, very safety conscious.

As well as all that, I've now met most of our Quarry Managers and Area Quarry Managers, had the grand tour of their operations and been keen to hear about their everyday processes, safety improvements and plans for the future.

If I haven't met you yet, I hope to soon and am looking forward to it!

## Background

My Health & Safety background is originally in logistics, first supporting Newhouse, Dalcross and Carrick Fergus depots for Co-op then moving to a short stint at Hermes, implementing Covid-19 controls with their supply chain in Scotland and the North of England. A year spent as HSEQ Admin with Mulholland contracts, a civils company specialising in groundworks, utilities and surfacing, gave me the first-hand experience needed to get back into an Advisor role but within construction.

I'm a mother of two grown up daughters; both dedicated career girls and two funny boys.

I enjoy hillwalking and climbing with my dog, an enthusiastic Munro 'bagger'; current project is leash training the cat so he can join us on the hills. Once completed I may reprise my seven summits goal, there is great practice to be had on a quarry walkaround!

Other pleasures are roller skating and my 1974 Cortina.

## Leith's Future

Having spent much of my working life in the employment of large, corporate companies, it is really refreshing to have joined a family company. I've had fantastic support and been offered great training opportunities.

By the end of my first year with Leiths I hope to be familiar with all our divisions, deliver our in-house courses, meet many more of the crews and complete my own study to achieve Graduate membership of IOSH.

I'm excited to be on this journey with a company who matches my enthusiasm and supports my professional development.



## LIFETIME IN THE ABERDEEN GRANITE INDUSTRY – THE LIFE AND RETIREMENT OF ALLAN BRUCE, FYFE GLENROCK



Allan came from a farming background, and he knew what it meant to work hard seven days a week and having few holidays.

At school he enjoyed art and technical subjects and, when it came to leaving school at 15 years of age, his father advised him to obtain a trade. At that time, career choices were either a plumber, joiner or stone mason. For Allan, the choice was masonry, because it was different, and he thought it would put his art skills to some use.

It was a 4-year apprenticeship with John Fyfe Ltd commencing July 1966 at Seaforth Road in Aberdeen. The pay was £2-5s-0d which was not enough to cover lodgings at £2-15s-0d, so his parents made up the difference with a little extra to ensure there was sufficient to take the bus home to Alford at the weekends.

Like most apprenticeships, the first 6 months was not easy, but eventually it became enjoyable. At the Technical College he was the first John Fyfe apprentice to be top of the class which earned him a £2-0s-0d bonus. The incentive was there to study hard and, with a combination of day and night classes, he gained his National Certificate in Construction. After 2 years in the workshop, Allan was given the opportunity to spend the afternoons in the drawing office. This then progressed into learning more about pricing, etc.

Allan never quite completed his apprenticeship as he was sent to other departments within John Fyfe (Kemnay Quarry and Denny Stirling Concrete Works). A Manager's position at Seaforth Road Granite Yard became vacant and, at the age of 21, Allan accepted the position. It was a daunting position to be given at such a young age, but it was exciting to have the responsibility for what was recognised as one of the oldest established Granite Merchants in Aberdeen.

Fortunately, with John Fyfe's reputation, there was no shortage of prestigious projects and having good contacts with stone fixing companies throughout the UK, made the earlier days easier.

John Fyfe, being a member company of Aberdeen Construction Group (ACG), made several acquisitions during the 1970 and 80's

– Charles McDonald, George Stalker, William McKay and Granite Supply Association. This brought the total amount of employees to over 100. The four Granite Yards were all Aberdeen City Centre based.

In 1985 it was decided to relocate to a new purpose built facility at Westhill. During this time Allan became a director of John Fyfe Ltd and also President of the Granite Guild in London (now an honorary member).

During the next 10 years, ACG was acquired/merged with other Groups – Raine, Evered, Bardon and, eventually, Aggregate Industries. Bardon also had other Stone companies being Waterhouse Denbigh and Pisani. It was with Bardon that a decision was made to sell all non-core activities (anything that was not in quarries and concrete products) and the Stone Businesses were placed on the Market.

After some negotiation Allan left John Fyfe in 1998 with a deal to acquire the business of Fyfe Memorials. It was a twist of fate that the Pisani business had been sold 2 years earlier and it made sense that Allan joined up with them for stability and comfort of working with a team he knew well, and now traded as Fyfe Glenrock.

For the next 10 years, the Pisani Group had operations in Greece, Italy, Bulgaria and India. Several high-profile projects were secured by being part of the Group – the Scottish Parliament Edinburgh, Chelsea Creek London, Weston-Super-Mare, Transport Museum Glasgow.

However, the Credit Crunch in 2009 brought the Pisani Group into financial difficulty due to high levels of borrowing within Greece and a New Pisani London showroom. For 8 years it would continue to trade, but in 2017 it was decided to place the Group in administration and the Fyfe Glenrock/Memorials business was for sale.

Having had nearly 8 years of Pisani austerity, the Fyfe Glenrock business needed support with machine maintenance, investment and better standards of Health & Safety.

Leiths acquired Fyfe Glenrock/Memorials in July 2017. It has not been easy to bring Fyfe Glenrock back to the levels that it used to be, but, with Leiths support, this can be achieved with investment and training of skilled tradesmen which has been the backbone of many successful projects.

As for what to do in retirement, Allan has many DIY projects at home that need to be completed, especially his water feature that he started nearly 30 years ago! He may also take up curling again, a sport that both he and his wife enjoyed playing in their younger days. What he is most looking forward to is travel both home and abroad with his wife Fiona and spending time with his family.

**Parting after 56 years will be sad for Allan, albeit finally his apprenticeship will be over.**

## Specsavers

### EYE CARE POLICY AND SPECSAVERS DISCOUNT SCHEME

The Company intention is to provide and maintain a healthy and safe working environment for all its employees, as well as ensuring that all that is reasonable and practicable is done to comply with the Health and Safety (Display Screen Equipment) Regulations 1992 and any accompanying regulations.

Employees who use a VDU (monitor, laptop, tablet, or smart phone) are entitled to request an appropriate eyesight test to be conducted by a competent person and may request a test at regular intervals every two years or sooner if recommended by the optician.

Employees who require safety glasses as part of their specified PPE, the full cost of these will be met by the Company.

All eye tests are free in Scotland. You can have a free eye examination once every two years if you are between 16 and 59 years old.

You can have a free eye examination once a year if you:

- are under 16
- are 60 or over
- have ocular hypertension or diabetes
- have glaucoma, or
- are 40 or over and your mother, father, brother, sister, son, or daughter has glaucoma

If you are interested in finding out more about the Group Scheme, please contact your Line Manager or a member of the HR Department.



property | legal | financial

### ABERDEIN CONSIDINE – LEGAL ACCESS SCHEME

Aberdein Considine have launched a digital service within their Staff Discount Scheme which provides substantial savings in Property, Legal and Financial Services.

In summary, the scheme offers a 15% discount off all estate agency fees, conveyancing and leasing fees, and all other legal fees (family law, dispute resolution, personal injury etc), together with 15% off wills, trusts and documents relating to powers of attorney. They can also offer a free financial health check, a retirement and pension review, and also help first time buyers or those looking to re-mortgage.

The scheme is open to ALL Leiths employees and family members and is completely confidential.

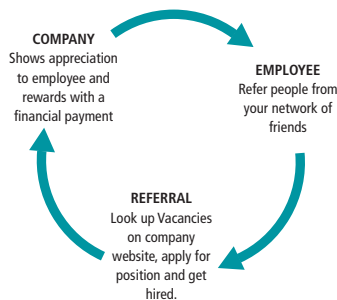
For anyone interested in discussing their individual requirements with Aberdein Considine, please register on their digital system by visiting - [www.acandco.com/legalaccess](http://www.acandco.com/legalaccess). You can register now or at any time, even if you don't have any immediate requirement. Advisors can offer Zoom based presentations/meetings or one to one consultations where required, and ensure staff have the benefit of independent advice.

If you have any questions relating to the services offered by Aberdein Considine, you can also contact them direct:

**Charlie Fraser, Partner:**  
[cfraser@acandco.com](mailto:cfraser@acandco.com)

**Graeme Ross, Business Development Director:**  
[graeme.ross@acandco.com](mailto:graeme.ross@acandco.com)

## EMPLOYEE REFERRAL SCHEME



Finding and attracting, future talent is essential to our continued growth and to continue to deliver the best service to our customers. The best way to achieve this is through our own employees. The Leiths Employee Referral Programme is open to all current employees.

Payments will only be made when all criteria are met:

- The referral form is completed, in accordance with the Policy.
- Applicant has completed the Company application form.
- After successful completion of 12 week probation period by new employee.
- Any employee who successfully refers a new employee will receive £300.

Please refer to the HR Employee Referral Policy for full details of the scheme.

## LEITHS

**Leiths (Scotland) Ltd - Current Vacancies**

To view all the Group's current vacancies, please visit the Careers Page on our Website [www.leiths-group.co.uk](http://www.leiths-group.co.uk)

## They'll remember you. And you can remember them.

Did you know you can pass on your pension to the people (or charities) you love the most?

Let us know who they are, so we can fulfil your wishes when you no longer can.

**It's your money. Take control of it.**



Manage your account at  
[www.thepeoplespension.co.uk/onlineaccount](http://www.thepeoplespension.co.uk/onlineaccount)

For people, not profit

the  
people's  
pension

FOUNDED 2005 027



**FYFE** **glenrock**

FOR NATURAL STONE

FYFE GLENROCK, OUR SUBSIDIARY COMPANY IN OLD MELDRUM, HAS OVER 160 YEARS' EXPERIENCE OF CRAFTING NATURAL STONE PRODUCTS.

The Group are pleased to offer a discount on decorative surfaces to all Leiths employees and colleagues.



Please contact the showroom on Tel. 01651 873873 or email [sales@fyfe-glenrock.com](mailto:sales@fyfe-glenrock.com) for any enquires, quoting discount code – 21Q3.

## Construction Worker Helpline



Life doesn't always go to plan. The Construction Worker Helpline offers you free support and guidance in times of need.

- Need help with debt or money worries?
- Think some counselling would benefit you?
- Want some guidance about housing and social welfare?
- Struggle with mental or physical health issues?
- Financial assistance for manual operatives and their dependents \*

Life doesn't always go to plan. The Construction Worker Helpline offers you free support and guidance in times of need.

Call us in confidence

Freephone  0808 801 0372

8am to 8pm – 7 days a week.

\*Only construction worker 'manual operatives' and their dependants have access to financial assistance, for example, with rent or mortgage arrears. Other construction employees (site and office based) have access to all other services.



B&CE's Charitable Trust set up the Construction Worker Helpline so you can feel confident speaking to a friendly voice, knowing they've the experience to point you towards the help you need. B&CE is a not-for-profit organisation with a clear focus on its members. The helpline was launched to help even more workers in construction.

B&CE has been providing financial products to the construction industry since 1942. We're pleased to offer our new Construction Worker Helpline service, a non-contractual benefit, set up by B&CE's Charitable Trust. (The Trust reserves the right to withdraw the service at any time.)



## Competition Winner Issue 15

Thanks to everyone who entered the last Leiths News Competition in Issue 15 (Winter 2021).

The competition gave employees an opportunity to win £100.00 by answering the following question:

**Q: When was the original bridge on the Mar Lodge Estate built?**

**A: 1848.**

We had 24 correct entries which were entered into our draw and the lucky winner was **Jenny Smith, Sales Admin Supervisor, based at Rigifa.**



## COMPETITION!

To be in with a chance of winning £100.00, please tell us...

**Q: Are businesses on commercial energy tariffs protected by an industry price cap?**

Entrants should send their answer, including name, place of work and contact details to Caroline Anderson ([canderson@leiths-group.co.uk](mailto:canderson@leiths-group.co.uk)) by Friday, 17 June 2022.

The winner will be randomly picked from all correct entries and announced by Friday, 24 June 2022 and featured in the next edition of Leiths News.

**Good Luck!**



## Group Companies

### 1 Leiths

Leiths (Scotland) Ltd  
Rigifa, Cove, Aberdeen  
Aberdeenshire AB12 3LR  
Tel: 01224 876333  
Fax: 01224 876332

### 4 Markon

Antonine House  
6-10 Dunnswood Road  
Wardpark South, Cumbernauld  
Glasgow G67 3EN  
Tel: 01236 875134  
Fax: 01236 875525

### 2 Lawrie Demolition

Rigifa, Cove  
Aberdeen  
Aberdeenshire AB12 3LR  
Tel: 01224 876333  
Fax: 01224 876332

### 5 Ross

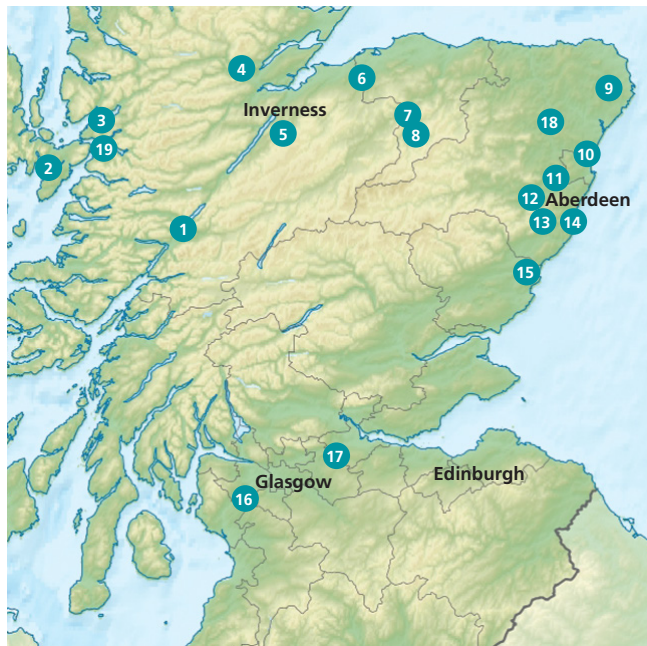
A Ross & Sons Ltd  
Daviot  
Inverness  
Inverness-shire IV2 6XN  
Tel: 01463 772255  
Fax: 01463 772321

### 9 Joss

Joss (Aberdeen) Ltd  
Parkhill, Dyce  
Aberdeen AB21 7AT  
Tel: 01224 774422  
Fax: 01224 772444



## Group Resources



### 1. Highland Lime

Torlundy, Fort William  
Inverness-shire, PH33 6SQ  
Tel: 01397 702227  
Fax: 01397 702308  
SERVICES (See Key)  
**A B F H I J K N O**

### 2. Torrinn Quarry

Leiths (Scotland) Ltd  
Broadford  
Isle of Skye, IV49 9BA  
Tel: 01471 822265  
Fax: 01471 822266  
SERVICES (See Key)  
**A D F J K N**

### 3. Kishorn Quarry

Nr Strathcarron  
Ross-shire, IV54 8XF  
Tel: 01471 822265  
Fax: 01471 822266  
SERVICES (See Key)  
**D F J N**

### 4. Achilty Quarry

Leiths, Contin, Strathpeffer  
Ross-shire, IV14 9EG  
Tel: 01997 421122  
Fax: 01997 421145  
SERVICES (See Key)  
**C D F K R**

### 5. Mid Lairgs Quarry

A Ross & Sons Ltd  
Daviot, Inverness  
Inverness-shire  
IV2 6XN  
Tel: 01463 772211  
Fax: 01463 772321  
SERVICES (See Key)  
**C D E F J K N O**

### 6. New Forres Quarry

Leiths (Scotland) Ltd  
Rafford, Forres  
Moray  
IV36 2RQ  
Tel: 01309 671188  
Fax: 01309 671199  
SERVICES (See Key)  
**C D F J K N P**

### 7. Bluehills Quarry

Leiths (Scotland) Ltd  
Craigellachie  
Moray  
AB55 4BW  
Tel: 03301 190627  
Fax: 01340 820890  
SERVICES (See Key)  
**C D F J K N**

### 8. Parkmore Quarry

Leiths (Scotland) Ltd  
Dufftown, Keith  
Moray, AB55 4DL  
Tel: 01340 820200  
Fax: 01340 820890  
SERVICES (See Key)  
**A D F J R**

### 9. Longside Concrete Plant

Faichfield, Longside  
Peterhead,  
AB42 3ED  
Tel: 01779 821466  
Fax: 01779 821354  
SERVICES (See Key)  
**J**

### 10. Loch Hills Quarry

Joss (Aberdeen) Ltd  
Parkhill, Dyce  
Aberdeen, AB21 7AT  
Tel: 01224 774422  
Fax: 01224 772444  
SERVICES (See Key)  
**C D G J K O**

### 11. North Lasts Quarry

Leiths (Scotland) Ltd  
Peterculter, Aberdeen  
Aberdeenshire, AB14 0PE  
Tel: 01224 732690  
Fax: 01224 876332  
SERVICES (See Key)  
**C D F K N**

### 12. Nether Park Quarry

Joss (Aberdeen) Ltd  
Drumoak, Banchory  
Kincardineshire, AB31 5AD  
Tel: 01224 660468  
Fax: 01224 772444  
SERVICES (See Key)  
**D O**

### 13. Lochton Precast Concrete

Leiths (Scotland) Ltd  
Slug Road, Durris  
Banchory, AB31 6DD  
Tel: 01330 844444  
Fax: 01330 844417  
SERVICES (See Key)  
**I J**

### 14. Blackhills Quarry

Cove, Aberdeen  
Aberdeenshire  
AB12 3LR  
Tel: 01224 897568  
Fax: 01224 897590  
SERVICES (See Key)  
**C D F K N**

### 15. Montrose Concrete Products

Leiths (Scotland) Ltd  
Broomfield Industrial Estate  
Montrose, DD10 8SY  
Tel: 01674 677037  
Fax: 01674 672809  
SERVICES (See Key)  
**I J**

### 16. Lugton Lime

Lugton  
Kilmarnock  
Ayrshire, KA3 4EB  
Tel: 01505 850435  
Fax: 01505 850590  
SERVICES (See Key)  
**A F H K**

### 17. Markon Office

Antonine House  
6-10 Dunnswood Road  
Wardpark South  
Cumbernauld  
Glasgow, G67 3EN  
Tel: 01236 875134  
Fax: 01236 875525  
SERVICES (See Key)  
**L M Q T**

### 18. Fyfe Glenrock

Academy Way  
Colpy Road Industrial Estate  
Oldmeldrum, Inverurie  
AB51 0BZ  
Tel: 01651 873873  
Fax: 01651 873399  
SERVICES (See Key)  
**S**

### 19. Kishorn Port Ltd

Kishorn Base, Kishorn  
Strathcarron, IV54 8XA  
Tel: 01397 773840  
Fax: 01397 773850  
SERVICES  
Dry Dock  
Port & Harbour Services

## KEY

**A** Agricultural Lime  
**B** Animal Feed  
**C** Asphalt Products  
**D** Decorative Stone  
**E** Concrete Blocks

**F** Hardrock Quarry  
**G** Inert Landfill Site  
**H** Limestone Filler  
**I** Precast Concrete Products  
**J** Ready-Mix Concrete

**K** Recycling Facilities  
**L** Road Marking  
**M** Road Planing  
**N** Rock Armour  
**O** Sand and Gravel Quarry

**P** Civil Engineering and Surfacing  
**Q** Traffic Management  
**R** UKAS Accredited Laboratory  
**S** Masonry and Specialist Natural Stone Products  
**T** Signage

Leiths News is published for employees, customers and colleagues of the Leiths Group and its associated companies by Leiths Scotland Ltd, Rigifa, Cove, Aberdeen, AB12 3LR.

If you have any stories for the next issues of Leiths News, please send them to: [canderson@leiths-group.co.uk](mailto:canderson@leiths-group.co.uk)

Rigifa, Cove  
Aberdeen AB12 3LR

T: 01224 876333

F: 01224 876332

[www.leiths-group.co.uk](http://www.leiths-group.co.uk)

**LEITHS**  
Built on Quality