

Issue 10, Summer 2018



Leiths NEWS

The newsletter of Leiths (Scotland) Ltd

Produced for our Employees, Customers and Colleagues.

ABERDEEN HARBOUR EXPANSION PROJECT UPDATE



page 8

Also featured in this issue



Concrete Supply at Triple Kirks, Aberdeen

page 4



Wildlife in the Quarries

page 5



Markon's Blue/Red Light Exclusion Zone Initiative

page 10

LEITHS

Built on Quality

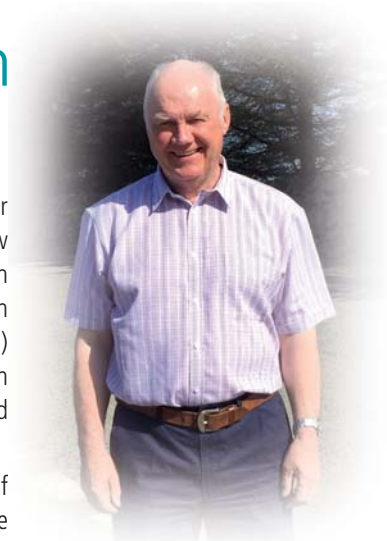
www.leiths-group.co.uk

Welcome to Leiths NEWS

In this issue

End of an era at Middleton Lime Works	p3
Concrete Supply to the Triple Kirks, Aberdeen	p4
'Quickmix' boosts sales at Montrose Precast	p4
Wildlife in the quarries	p5
Kinghorn Port attracts decommissioning funding	p5
Demand for Recycled Sand grows at Loch-Hills Quarry	p6
New products made at Lochton	p6
C&S on Track in Forres	p7
Lawrie Demolition Ltd - Spynie Hospital (Elgin) Contract	p7
Aberdeen Harbour Expansion Project Update	p8-9
Markon's Blue/Red Light Exclusion Zone Initiative	p10
Aberdeen Granite Quarries and new orders for Cove Granite	p11
Cove in Bloom	p12
Cove Woodland Trust	p12
Royal Northern Agricultural Society Spring Show	p12
Energy Savings	p13
Quarry Competence	p13
A Day in the Life of . . . Andrew Bustard	p14
George Mathers Retires after 40 years' service	p14
Amy Johnstone - a trip out!	p14
Construction Worker Helpline	p14
National Walking Month	p15
Competition	p15

Message from the Chairman



Aberdeen has been a beneficiary of major infrastructure investment over the last few years, including the Aberdeen Western Peripheral Route (AWPR), a new Aberdeen Exhibition and Conference Centre (AECC) and the Aberdeen Harbour Expansion Project (AHEP). This in turn has created plenty of opportunities for our business.

We have delivered significant volumes of materials to the AWPR over the last three years, and Markon is currently installing white lines and cats eyes along the full 46km length of the project. Our Civil Engineering and Surfacing Division has been busy assisting with the upgrading of the external infrastructure and surfacing the car parks at the AECC, and our precast business has supplied the concrete stairs and landings to the exhibition buildings.

Not surprisingly, this issue of Leiths News majors on AHEP, where in 2017 we started to supply major volumes of armour and core materials to the northern breakwater. This should continue for the next two years, keeping Blackhills Quarry particularly busy.

The fall in oil prices between 2014 and 2016 heralded a decline in industrial and commercial development in the City and the timing of these major projects has been quite fortuitous.

It is good to see our newly acquired Fyfe Glenrock business looking at opportunities to source dimension stone from Leiths quarries. Blocks of stone from Blackhills, Achilty, Bluehills, Torrin and Kishorn are all being trialled, and we will be promoting these indigenous materials to architects throughout Scotland.

This issue highlights some of the history behind our business, ranging from centuries old lime kilns and mines at Middleton, near Edinburgh, through to 18th century granite quarrying in the Aberdeen area. We can be proud of this heritage which created the foundations of the Group.

Ian Leith
Chairman

Get in Touch!

Leiths News is published for employees, customers and colleagues of the Leiths Group and its associated companies.

Leiths News will be published on a regular basis but we can only do this through the contributions of articles and features from our employees. If you have any comments, ideas for stories, or pictures for future issues, please get in touch.

I hope you enjoy this edition of Leiths News and thanks to everyone who has contributed so far.

Caroline Anderson, Editor

T: +44 (0)1224 293260

E: canderson@leiths-group.co.uk

www.leiths-group.co.uk

End of an era at Middleton Lime Works

Leiths purchased Howie Minerals from the Howie family back in 2008. Howie Minerals specialised in the production of limestone fillers from three locations, one of which was Middleton Lime.

Middleton Lime is located near Gorebridge just off the A7 south of Edinburgh. In its day, Middleton Lime was a strategic source of high quality limestone used within the construction and agricultural sector. For decades limestone was both mined and quarried from this site.

A very interesting aspect of Middleton Lime was the method of extraction during its mining phase.

This involved extracting the limestone around pillars of rock which were left to support the roof of the mine. This method can be quite dangerous as the existing rock is the only support to the roof which can make these mines unpredictable and prone to collapse.

The extracted limestone would be transported by bogie and track down to the lime kilns for burning. Burning lime was common practice for producing quicklime which was used in building mortars.

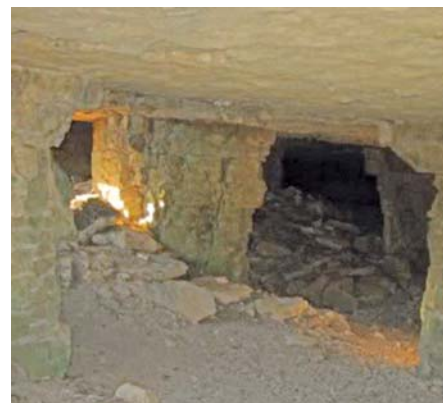
Once mining was complete, extraction moved to more traditional quarrying techniques and the limestone production moved away from burning lime to grinding lime in industrial mills. Milled limestone in its powder form is used in many industries. Middleton Lime focused on producing limestone filler which is used in asphalt materials. However, other companies produce finer limestone powder which is used in the manufacture of carpet backing, bin liners and even toothpaste.

Middleton's limestone reserves were finally exhausted at the end of 2012 and the site stopped production in 2013. Production of our limestone products now rests with our other sites, namely Lugton Lime in Ayrshire, Highland Lime near Fort William, Parkmore near Dufftown in Moray and Torrin on the Isle of Skye.

At the end of 2017, Leiths took the decision to commence the demolition and removal of the industrial plant at Middleton. Lawrie Demolition supervised the works and all that's left to be removed is the lime kilns. Once these have been removed we will have a great site ready to offer for new development opportunities.



Kilns



Mines



Site before demolition



During demolition

Concrete Supply to the **Triple Kirks, Aberdeen**

Concrete supply from our Blackhill's concrete plant commenced in December 2017 to Andrew Cowie Construction for student accommodation, at the site of the former Triple Kirks.

Designed by Archibald Simpson and opened in 1843, the Triple Kirks was the only church in Scotland purpose built to house three separate congregations. Only the East kirk now survives, with the remainder of the site lying derelict since the 1970s. At the heart of the three churches was the spire, which has remained a prominent feature on the Aberdeen skyline and will be retained as part of the development. The spire stands out due to its red brick construction in a city famous for its granite buildings, and is a category A listed building.

Leiths worked closely with the Andrew Cowie Construction site management, and following successful trials on site, Leith's RIGAcree Rapid was proposed for the cores. Leiths' Technical Services were on site during each pour, testing concrete and taking site cured test cubes to monitor and report early strength development.

With concrete supply starting during the winter months, it was important that Leiths designed a concrete that allowed the early stripping of the formwork. This was critical during periods of cold weather for the construction of the three cores; the highest being 13 stories high. As the concrete cores were jump form, early strength was needed so there were no delays in the construction.

Concrete supply is currently on-going and the cores are clearly visible as they emerge from the foundations next to the well-known red spire. Once complete, the 13-storey project will include 175 studio flats, and developer, Dandara, also plans to include a cafe, gym and various activity rooms in the £20 million scheme.



Leiths have worked closely with Andrew Cowie Construction on a number of high-profile city centre contracts all with different challenges, supplying concrete to The Capitol, Aberdeen Art Gallery and Silver Finn. Leiths look forward to continued work with them on many more projects across Scotland.



'Quickmix' boosts sales at Montrose Precast

Montrose Precast are now actively selling ready mix concrete to the external market from their on-site ready-mix plant which has been aptly named 'Quickmix'.

The volumetric mixer was purchased primarily for producing the concrete required for manufacturing the sites' wide variety of precast products. However, it soon became evident that this mixer could be easily adapted to offer concrete to its customers.

The mixer is ideal for small collect customers who

require concrete 'quickly' without the hassle of waiting in long queues at other larger supply plants that concentrate on loading traditional mixer trucks.

The popularity of Montrose Precasts ready mix facility is growing by the week with customers commenting positively on the quality of the concrete and the prompt service. Montrose is an ideal location for such a facility given the nearest larger alternative plants are based in Dundee, Forfar and, of course, our own at Blackhills Quarry in Cove.

For any ready-mix concrete or precast product requirements, please feel free to drop into the site at Broomfield Industrial Estate in Montrose or alternatively call the team on 01674 677037 who will be delighted to assist.



*Kits**Otter*

Wildlife in the Quarries

**IS WILDLIFE ATTRACTED TO
QUARRY SITES? – SURPRISINGLY
THE ANSWER IS YES!**

Many people might think that busy quarries are an inhospitable and harsh environment where birds and animals are absent. In practice, wildlife is both attracted to and thrives within the quarries in the Leiths Group. Numerous species of birds choose to nest in and around company sites. For example sand faces and stockpiles can attract large sand martin colonies with staff ensuring one area of the site is left untouched during the nesting season to allow the birds to nest away from the extraction faces. Peregrine falcons successfully breed within Leiths rock quarries. Inaccessible ledges high on a quarry face provide ideal and safe nest sites with no access to egg thieves. We have a good relationship with the RSPB, with quarry staff reporting anything suspicious and the RSPB monitoring the ongoing breeding success. The RSPB estimate that only 26 pairs of Slavonian grebe nest in the UK and at least two pairs nest in a Leiths site. Depending on which quarry you visit you may be fortunate enough to see sea eagles, red kites, ravens or woodpeckers.

Some Leiths quarries play host to red deer or roe deer with badgers, foxes, red squirrels and pine martens using quarry sites to forage. Otters living along the banks of burns and ditches happily co-exist with adjacent quarry operations, successfully breeding within metres of a busy quarry.

The next time you visit one of Leiths quarries don't be surprised if you see some of the wildlife which shares the site with the quarry staff.

Kishorn Port attracts decommissioning funding

KISHORN PORT LTD (A 50:50 JV BETWEEN LEITHS AND FERGUSON TRANSPORT) RECENTLY SECURED FUNDING FROM THE SCOTTISH GOVERNMENT'S DE-COMMISSIONING CHALLENGE FUND (DCF), ALLOWING KPL TO EXTEND THE SCALE OF ITS INVESTMENT AT THE SITE AND TO HELP ESTABLISH SCOTLAND AS A GLOBAL CENTRE OF EXCELLENCE IN DECOMMISSIONING.

With the help of these funds and the continuing support of Highlands and Islands Enterprise, KPL has completed a further £1 million upgrade to the infrastructure at the port during March 2018.

The range of works was far reaching and included the installation of a major pumping system to ensure the speedy dewatering of the dry dock, which is one of the largest in western Europe. Cathodic protection to the sheet piled structures at the dock has also been installed, along with the installation of fendering to protect the huge flooding tubes from accidental impact. During 2017, an access ramp was blasted into the side of the dry dock, and these funds enabled it to be permanently surfaced in concrete.

The concrete caisson gates, which were cast in the mid 1970's to enable the construction of super-sized oil production platforms, have had some minor repair works undertaken and a new set of modified gate seals has been manufactured.



*Drone photo of the 160m diameter Kishorn drydock
taken in March 2018*

Demand for Recycled Sand grows at Loch-Hills Quarry

Loch-Hills Quarry at Parkhill, Aberdeen specialises in recycling inert construction and demolition (C&D) wastes. The site is primarily focused on producing high quality recycled aggregates such as type 1 sub base, crusher runs and filter stone.

However, producing recycled aggregates from inert C&D waste streams inevitably results in large quantities of fines being produced as a by-product of this process. By washing the recycled fines, it was clear a high-quality sand could be produced ideal for going back into construction projects.

Key to the entire process is the monitoring and segregation of the incoming waste streams to ensure maximum recycling returns are achieved.

Waste streams that are not mixed with soils i.e. concrete, bricks / blocks, aggregates, asphalt cuttings etc are all put into individual piles ready for processing directly into finished products. Those that are mixed with soils are stocked separately ready for screening.

The mixed materials are loaded onto a screen by mechanical excavator to separate into 3 distinct fractions, a plus 75mm, 75-20mm and minus 20mm. The clean aggregates with the fines removed are sent onwards for further crushing and screening. The minus 20mm fraction is fed into our wash plant for processing into a clean 20mm and 10mm aggregate as well as a washed sand product.

The washed aggregates are sold as a drainage stone and the sand is purchased by a wide range of customers for many applications within the construction trade. Common uses of the sand are

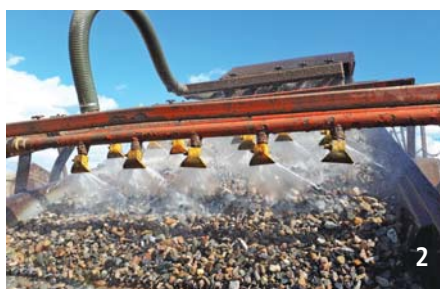
for bedding layers beneath slabs, mono blocks, cables, pipework and even low strength concretes.

Our UKAS accredited laboratory based over in Cove, Aberdeen test the sand on a regular basis to ensure the quality is of a high standard that meets a washed sand specification.

The team at Joss are fully committed to waste reduction and are eager to maximise inert C&D waste recycling. With their fleet of steel bodied vehicles Joss can offer a collection service for all your C&D waste as well as accept waste streams at the gate of Loch-Hills Quarry.

Demand for the recycled sand is steadily increasing, which, before washing, would have been deemed as a waste material and likely been put to landfill. This drive and commitment to waste reduction has resulted in the Leiths Group being approved by Zero Waste Scotland as a supplier of high quality recycled materials.

For any enquiries regards our tipping facility at Loch-Hills or material purchases please contact Loch-Hills Quarry direct on 01224 774422 where the team will be glad to assist.



For any enquiries regards our tipping facility at Loch-Hills or material purchases please contact Loch-Hills Quarry direct on 01224 774422 where the team will be glad to assist.

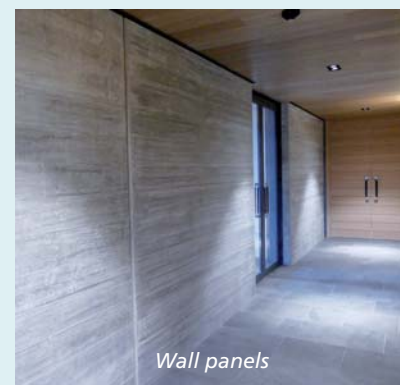
New Products made at Lochton

Lochton were recently involved in a large project for Gordon Mitchell Contractors.

The division was tasked with manufacturing bespoke external and internal wall panels, a fireplace unit weighing 5.8 tonnes, elaborate chimney copes weighing 3 tonnes each, along with sill and coping stones.

The project itself started in April 2016 and involved the construction of a 1100m² house, a stable block complete with all the ground works and landscaping. Thirty sub-contracting companies of various sizes were used on this unique development and all labour and most of the materials were supplied locally.

Lochton manufactured external and internal wall panels which had to have a wood lined effect on the face.



Wall panels

Bespoke units like this were a very interesting challenge; manufacturing these units upside down onto a wood lined mould and special swivels were purchased to assist with turning the units to their correct position. It was essential that the units were made with no air holes as they would all be seen as a finished product. The three sided fireplace unit had the same detail, again making sure that the unit had no imperfections due to it being a focal point in the house.

The biggest challenge was working in the long cold wintery conditions. However, the contract was completed on time and an exceptional standard was met.

C&S on Track in Forres



The surfacing team from New Forres recently completed the surfacing works at the new Forres Railway Station for Bam Nuttall.

The project was phase 1 of the Aberdeen to Inverness Improvement Project which is part of Transport Scotland's Highland Enhancement Programme.

Leiths were involved in the surfacing of the new approach roads, bridge, car park and platforms. Upgrading of the level crossings and platforms in Elgin was also completed.

The project was logistically challenging with many nightshifts during track possessions and co-ordination with other contractors. However,

our client Bam Nuttall encouraged a collaborative environment which was essential in ensuring a successful completion.

Leiths are proud to have played their part contributing towards the local infrastructure which will bring great benefits to the Forres community.



Lawrie Demolition Ltd - Spynie Hospital (Elgin) Contract



Lawrie Demolition have been awarded the contract from Chap Construction to carry out demolition and asbestos removal at Spynie Hospital, Elgin.

The hospital opened in 1935 to provide a purpose built centre for patients with infectious diseases, and then in the 1950's and 60's re-purposed to provide geriatric services, and has recently been used for office accommodation.

The site, which is run by NHS Grampian, has been earmarked for closure for some time and on completion of the demolition, the site will be placed on the open market. Careful planning is central to the process to ensure there is minimal disruption to the adjacent care home, dental centre and nearby residential buildings. The programme of works will take 24 weeks from start to finish and will see the buildings cleared of asbestos prior to the demolition team stripping the interior of the buildings, re-cycling timber and metals before the mechanical demolition of the structures. The foundations will then be excavated and stockpiled on site in preparation for crushing.

Leiths Quarrying Division will crush the materials to a 6f2 grading prior to the materials being placed back into the footprint of the building.

Aberdeen Harbour Expansion Project Update

The winter closure of the north breakwater construction has ended and much has taken place over the last 6 months for the Aberdeen Harbour Expansion Project (AHEP).

Our focus has been the continued advance production of the three primary materials within our order which are:

1. 0.1 - 500kg Core
2. 60 – 300kg Light Armour
3. 1.0 – 3.0t Heavy Armour

These three material groups will generate significant outgoing tonnages from our Blackhills Quarry in Cove, Aberdeen.

We have continued to work hard over what has been a long a gruelling winter to create a sizeable forward stock of 0.1 – 500kg core material. Deliveries to the North Breakwater (NBW) recommenced at the end of April 2018 which will keep our tipper fleet active. In addition to production for the NBW we are currently engaged in delivering core material to a drilling platform which is being constructed from the beachfront out towards the NBW.

A second trommel was delivered to Blackhills Quarry on 5 April 2018 to boost our daily production of core and 60 – 300kg armour. We have set the drum sizes on both of our trommels so they can be flexible in their ability to manufacture both of these products without the need for changing the drum opening sizes.

Supplies to the NBW have restarted and are likely to continue without stopping for six months subject to weather of course. Supplies during this period will mainly focus on the core and armour materials.

Throughout the advance production our technical team have been closely monitoring and testing the quality aspects of these materials. As well as ensuring the materials pass strict grading and shape limits armour products have additional test criteria imposed on them. The rock's strength is a key aspect which is tested both at the quarry and off site at specialist laboratories. Strength testing is an essential aspect for confirming if a rock can withstand the rigours of rough coastal seas which Aberdeen regularly suffers.

For testing at the quarry our UKAS accredited team undertake

what is called a 'Drop Test'. Here a set number of 1-3 t rocks are pulled from the supply stock. They are individually weighed and lifted by a mechanical excavator and dropped 3m onto a bed of rock armour of similar size. The rocks are then reweighed to check if any fragments have broken off. If more than 5% loss in weight is recorded i.e. pieces broken off, then that is deemed a failure.

In addition to the Drop Test we need to undertake 'Compressive Strength' testing. A specialist contractor has been engaged to core out sections of rock which are then sent to an external UKAS accredited laboratory. The cored rock is placed into test apparatus which applies a compressive load downwards until the core fails. It is this recorded failure load which gives the strength criteria of the rock and we are pleased to report our granite at Blackhills Quarry easily meets this criteria.

The theme for the last 6 months has centred heavily on the advance production and testing of the materials for the start of the 2018 season.

We were well prepared and restarted supplies in recent weeks and look forward to providing another update on our progress with this challenging but exciting project.



Construction of the drilling platform



Before construction



After construction
(artist impression)



Compressive stress testing



Drop test



60/300KG Production

Markon's Blue/Red Light Exclusion Zone Initiative

Whilst operating heavy duty machinery such as road planers, usually at night with surfacing operatives and other disciplines working in close proximity, it is essential that safety measures are in place to prevent accidents.

Operatives need to be made aware of dangerous equipment and clear safety signage should be in place. Even experienced operatives can be injured by moving plant due to a variety of factors, including complacency and lack of communication between operatives and plant drivers.

Markon addressed the communication problem some years ago under another of their Health and Safety initiatives by providing Pelter communication systems to all their planing operatives and HGV drivers on site. This enabled all personnel to speak with each other and issue instructions which can be easily heard above the noise of these machines and planer operators could instruct tipper drivers and banksmen alike.

Coupled with this initiative Markon supplied banksmen with light tubes which can display a red warning "Stop" or green "Go" whilst carrying out signalling duties.

The Blue/Red Light Exclusion Zone 5+2 Initiative adopted with advice from surfacing contractors, and operating in conjunction with the head sets and light bars, takes H&S onsite to another level and

our crews and all other site operatives are safer for Markon introducing this feature.

By making the 5+2 exclusion zone policy visual through the use of blue and red lights, Markon has made their health and safety policy clearer for everyone onsite.

All Markon planers incorporate this system and our road sweepers have been fitted with the rear red light exclusion zone also.



The initiative was rolled out following the steps below:

- Established a 5+2 initiative, encouraging operatives to maintain an exclusion zone of 2 metres to the side and 5 metres front and back of the machinery.
- The 5+2 initiative is clearly communicated on site through signs at the entry to site, on vehicle stickers and is featured in training procedures.
- Aware that much planing and surfacing works take place at night and highway sites can become very congested, the company took the policy further.
- They equipped the machinery with high-intensity blue lights that are directional on the road surface, clearly illuminating the 5+2 exclusion zone around the machinery.
- The lights will help operatives visualise the exclusion zone, therefore reducing the risk of accident.



Aberdeen Granite Quarries and new orders for Cove Granite

Between the years 1750 to 1900, over one hundred granite quarries operated within a 20-mile radius of Aberdeen. These quarries were producing dimensional blocks for harbours, bridges, municipal buildings, streetscapes, houses and memorials, throughout the UK and exported to America, Canada and Australia.

Most of these quarries are now closed and, in some cases, lost forever as they have been filled in and the surrounding areas developed.

The renowned quarries at the time and their distinctive granites were Rubislaw Grey, Kemnay Silver Grey and Peterhead Pink. Cove Granite had a strong presence and was found to be amongst the hardest and most durable and was used mainly for streetscapes.

Today the remaining quarries produce aggregate and a few have faces that can yield fault free dimensional blocks.

As Fyfe Glenrock is now part of the Leiths Group, it is exciting to explore what opportunities are available to source dimensional blocks from the Groups quarries.

Blackhills Quarry at Cove was first to be investigated and as the quarry is busy with

extracting armour stone for the new harbour project, there is an abundance of large blocks. The method of producing the blocks is not ideal for dimensional purposes. However, with careful selection, we have been successful in finding suitable blocks and, so far, secured orders to supply the projects detailed below.

There is an immense sense of pride from the workshop to produce these orders from blocks that would have otherwise been used as armour stone.

New Highland Games Centre Braemar



Blackhills granite will be used to form quoins and the string/cill course and chimney stack, with bullnose rustic and flame textured finishes. The heritage centre will tell the story of Highland Games throughout the centuries. The development is supported by HRH The Prince Charles, Duke of Rothesay, through two of his charities, Dumfries House Trust and The Prince's Foundation for Building Community. The structure will be located at the Princess Royal and Duke of Fife Memorial Park, where the Braemar Gathering is held.

Brompton Cemetery London



To replace fifteen spheres 176mm diameter with polished finish to simulate cannonballs, which had been vandalised. Supplied to Sally Strachey, conservators of Historic Building, Monuments and Sculptures.

Hope Lodge Sutherland

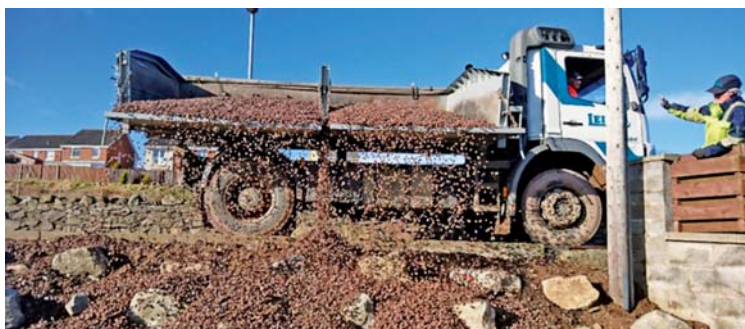
Blocks 350mm x 250mm thick in section forming (the octagonal) base course to a Belvedere (summerhouse, sited to command a scenic view) with flame textured finish. Hope Lodge Development in Sutherland will provide a world-class shooting lodge, spa and recreational activities for guests, which could create more than 100 jobs.



Cove in Bloom

Leiths have recently been involved in further projects with Cove in Bloom and the surrounding area.

The **Nether Loirston Growers Association (NLGA)** needed the carpark at their allotments improved and so approached Leiths for a price to resurface the area. Leiths contributed to the project, leaving the area in a far better condition, to the benefit of all the allotmenters.



Cove in Bloom called on Leiths for help with the rockery that is being established on the Green, Stoneyhill Terrace, in Old Cove - beside the Isie Caie sculpture.

With the large rocks in place in the bank and the pernicious weeds killed back, the next step was to cover the bank with gravel for the alpine plants to grow in. The problem that Cove in Bloom had was that



the ground drops away steeply from the side of a narrow road, so the usual tipper truck wouldn't have room to back up to the site for tipping.

Wendy Sutter, Cove in Bloom's Committee Secretary and Treasurer said, "Leiths were able to provide a side tipping truck and the driver was amazingly helpful, working his way step by step along the length of the rockery letting the gravel run down the bank to exactly where it was needed. With very little work after the drop was finished, the rockery was complete, and we have been able to begin planting. All that's needed now is enough plants to fill it!"

Cove Woodland Trust

The newly formed Cove Woodland Trust has raised enough funds to buy an area of 16 acres of land for the community which is crossed by a public right of way. The purchase is currently in the hands of solicitors but the pathway had not been maintained for some years until Cove in Bloom began opening it up again about 4 years ago. Since then it has been more and more popular as it has become accessible.

Wendy added, "Leiths have promised to work with the Trust to bring the path up to wheelchair accessible standard and we're looking forward to working with them to make this a lovely place for residents, employees, and visitors in the area to enjoy."

Royal Northern Agricultural Society Spring Show

The Spring Show, which is organised by the Royal Northern Agricultural Society (RNAS), is Scotland's first major event in the farming calendar. It is regarded as an outstanding business day by agricultural suppliers, major sponsors of the event and the farming community.

Over 100 organisations promote their latest products and services in the Thainstone Centre on show day. This includes an extensive display of machinery and trade stands, horse and pony classes, produce, Young Farmers competitions and the sale of pedigree bull, cattle and sheep classes.

This is the third year that Leiths have attended the show, with the stand situated within the Marquee section. Kevin Fraser, Leiths Area Sales Manager, along with Stephen Stewart, Leiths Concrete General Manager, and Roy Thomson, Leiths Precast Manager, manned the stand.

Unfortunately, the attendance numbers for the show were hugely affected this year by the heavy snowfall and freezing temperatures. Although attendance numbers were down, the stand was well attended. With the show being less busy, it allowed more interaction with existing and potential new customers when visiting the stand resulting in some good lines of enquiry.

Attendance at the show certainly raises the profile of the company and allows the public to see the full range of products and services that are available within the Group.



Roy Thomson (Precast Manager) and Kevin Fraser (Area Sales Manager)

Energy Savings

Energy savings can be made across the whole company, from the office building to operations on site.

With the continuous impact on the environment and the ever-rising costs in running plant and vehicles, quarry operators are looking at ways of making their sites more energy efficient. Energy and its use within the quarrying sector is one of the major costs in the production of aggregate or finished products, and a reduction in energy consumption will assist in reducing the business' operating cost per ton of material produced.

A new concrete plant was installed at Loch Hills Quarry in 2015. This new concrete plant has ancillary power to supply lights and accessories but the main production plant is supplied by a generator. Once the new concrete plant was operational the generator was switched on at the start of the day when the first batch was required and switched off when the last batch was batched, usually late in the evening. In effect the generator ran all day no matter what volume was being produced. After some research Kris Duda and Mat Malecki discovered that it would be possible to fit a remote start/stop to the generator. This would enable the operator to start and stop the generator from the safety of his cabin at the press of a button.

The main benefit of fitting this device, besides the obvious environmental one, is the amount of money which will be saved on the cost of gas oil as well as the cost of servicing. It was calculated that 15,690 litres of gas oil per year would be saved, a total of £7,060.50 saved per annum.

With a reduced number of hours that the concrete plant is now operating, the need for a service therefore decreased from one service per month to every 3.5 months. This simple device has provided great benefits of energy savings within Loch Hills quarry.



Please remember to:

- Switch off lights when not in use.
- Switch off heating when not required.
- Do not open windows whilst heating is on, switch off the heater instead.
- Utilise equipment sensibly (i.e. only fill the kettle in relation to the number of drinks you are making).
- Switch off plant and equipment when they are not being used – do not idle.
- Have vehicles, plant and machinery serviced on a regular basis.

Simple energy saving principles such as switching off engines to prevent idling is just one way to reduce energy consumption. It's the little adjustments that are often the easiest for reducing your energy usage. These small changes may not seem like much, but every little does really help when it comes to saving energy.

Quarry Competence

The Quarry division have committed to delivering the Extractives Safety Passport to all its personnel over the next year.

This qualification has been used by the industry as a demonstration of competence for entry and work on quarry sites and is quickly becoming a requirement for all extractives sites in the UK.

The qualification is awarded by the Mineral Processing Qualification Council and is regulated by OFQUAL. This qualification is nationally recognised and provides the holder with the necessary knowledge and skills to work safely in quarry environments.

To date, the qualification has been awarded to over fifty Leiths employees and has been delivered to other areas of the group such as the Technical and Contract Crushing divisions.

Key to the course is the content and delivery, each course follows the OFQUAL criteria for extractive industries and covers all the key components such as legislation, occupational health hazards, COSHH, guarding, lock off, permit to work, electricity, confined space working, risk assessment, fire, incident investigation, behavioural safety and PPE.

Leiths have been instrumental in the development of this course to a fully interactive series of sessions and this development has been received well by the awarding body and the regulator of the qualification.

Quarries Managing Director Grant Milne was quoted as saying "our aim is to deliver this extractives qualification to our workforce and we believe that the delivery of this course will complement the existing competence of our people"

The programme of courses will commence in 2018.



A day in the life of . . .

Andrew Bustard Contracts Manager at Markon

“ I joined Markon in September 2012 as a Contracts Manager at the inception of our traffic management division. The division has progressed from strength to strength every year since, with a steady manageable growth.

My day normally starts from 7-8am at our Cumbernauld office, giving daily briefings to the crews and making sure that they are organised for the day ahead. Once the crews have been put to work I update my daily entries spreadsheet with costs for projects carried out that day, adding any additional works requests throughout the day. Once a project has been completed, I compile an invoice breakdown which is then invoiced and sent to the client by our accounts team.

Due to the size of the division, I also carry out the estimating/tendering for all works from large frameworks to small private works. A portion of my day is taken up with analysing contract specifications, drawings etc to establish the method of traffic control required, keeping within the parameters of the spec and pricing accordingly.

Other daily duties include programming labour for the projects through our bespoke IQ system. Traffic management is a very 'supply and demand' industry with very little notice, this is probably the most challenging task in my daily function with cancellations and new requests coming in throughout the day and the need to be reactive when required with ongoing contracts.

Another of my tasks is to attend site progress and pre-start meetings, where all information is obtained and recommendations given to clients on what traffic control solution best suits their works & phasing requirements.

Every closure our operatives install, maintain or remove, has to have a site specific proposal drawn up for approval by local authority or trunk road organisations in order for a permit to be obtained so that the works can go

ahead as planned on specific dates. The traffic management proposals are produced by our autocad technician and checked by myself to ensure that the layout is what was discussed and agreed with the client.

I also carry out periodic safety audits on the crews to make sure that the closures are to standard and as per the approved layout, checking paperwork is being completed and the correct PPE is being worn. I also speak to the clients/site representative and ask how our operatives are performing on site. If there are any corrective actions required, these are carried out by via toolbox talks or discussed at monthly meetings with the crews. For the past two years now we have supplied traffic management for major events in Glasgow City Centre. Mostly over the course of a weekend, this involves attending all pre-start meetings to producing proposals and being involved on the days, organising the crews during installations and removal of closures.

I leave the office between 5-6pm daily, but my working day doesn't stop there, with crews calling to brief on the works carried out that day, to clients calling with requests as well as problems on any of our live projects; with issues like traffic light failure etc. reported by the local authority or police. It can be challenging, but at the same time an enjoyable challenge.

When I do get some spare time, I like to unwind playing golf and spending time with my kids. ”



George Mathers retires after 40 years' service

George, or Geordie as he's known to his friends and colleagues, worked for Leiths for over 40 years and was Leiths 2nd longest serving HGV driver.

George retired officially in August 2017 following the presentation of his 40-year long service award. He was an extremely experienced driver and will be a big loss to the team.

In the words of one of his colleagues, "He is straight talking, no frills, often grumpy, always opinionated, and will be hugely missed by everyone"!

We wish Geordie all the very best in his retirement.

Geordie (left), being presented with his retirement gift by Ian Leith, Chairman



Amy Johnstone, Purchasing Assistant at Leiths' Head Office in Cove, enjoyed a recent trip out of the office.

Amy had expressed an interest in seeing what the Civil Engineering and Surfacing Division did, because, as part of her role, she is regularly asked to order materials for site projects.

She was accompanied by Graham Davidson, C&S Site Manager and together they visited the following sites:

**AECC new Exhibition Centre • Greenburn Road & Wellheads Drive
A96 Thainstone Cycleway**

Amy was able to see materials on site that she had ordered and also what they were being used for. She also saw items of plant hire that she is responsible for ordering and updating on the Plant Hire Schedule and is now able to identify different types of plant.



Amy ready for site!

CONSTRUCTION WORKER HELPLINE

- Need help with debt or money worries? • Think some counselling would benefit you?
- Want some guidance about housing and social welfare • Struggle with mental or physical health issues?

Call in confidence FREEPHONE 0808 801 0372

Lines are open 8am to 8pm – 7 days a week

LIFE DOESN'T ALWAYS GO TO PLAN. THE CONSTRUCTION WORKER HELPLINE OFFERS YOU FREE SUPPORT AND GUIDANCE IN TIMES OF NEED.

***Only construction worker 'manual operatives' and their dependants have access to financial assistance, for example, with rent or mortgage arrears.**

Other construction employees (site and office based) have access to all other services.

B&CE's Charitable Trust set up the Construction Worker Helpline so you can feel confident speaking to a friendly voice, knowing they've the experience to point you towards the help you need. B&CE is a not-for-profit organisation with a clear focus on its members. The helpline was launched to help even more workers in construction.

B&CE has been providing financial products to the construction industry since 1942. We're pleased to offer our new Construction Worker Helpline service, a non-contractual benefit, set up by B&CE's Charitable Trust. (The Trust reserves the right to withdraw the service at any time.)

It's National Walking Month

Each May the charity, Living Streets, celebrates National Walking Month. A month dedicated to encouraging people across the country to take to their feet and feel the benefits of walking. By making simple changes to your day, such as walking all or part of your commute, planning a walking meeting or going for a lunchtime walk, there are many ways to incorporate walking into your working day.

The benefits of walking as a form of exercise are often underrated. From helping improve your physical and mental wellbeing, building walking into your day also saves money and helps the environment. With many of us rushing from the commute to the office, and then eating lunch at our desks before heading home for a night in front of the television, we are unwittingly risking our health. Walking is a fantastic way to keep active and maintain a healthy heart as it is fun, flexible and free. Walking for just 20 minutes a day can transform fitness levels, improve health and reduce stress and anxiety.

A brisk 20 minute walk can burn up to 110 calories so, if combined with a healthy eating plan, it's also an excellent way to lose a few pounds. There is a wealth of evidence that shows that physical activity can be as effective as medication in boosting mood – walking is a great way to clear your head at the beginning or end of a stressful day.

Who knows where walking can take you?

Here are some tips to get you started:

- Get some good shoes - no one wants sore feet!
- Record your steps with an Activity Tracking device.
- Find ways of fitting walking into your day, get off the bus/tube a bit earlier or park a bit further away.
- Invest in good waterproofs - walking in the rain is good if you are dry!
- And when you walk - look up, don't look at the ground, look at the rooftops and the sky, you'll feel so much better when you arrive at wherever it is you're going.



Campaign Calendar 2018

January	The 8 Glasses of Water 2 Week Challenge
February	National Heart Month
March	Organ Donor Awareness
April	World Day for H&S at Work
May	National Walking Month
June	Blood Donor Awareness
July/August	Sun Awareness
September	Macmillan Cancer Support – Coffee Morning 28th
October	Prostate and Breast Cancer Awareness
November	World Diabetes Day
December	Donation activities for Charities

The benefits of walking:

Reduce your risk of major illnesses, such as heart disease, stroke, diabetes and cancer by up to **50%**

Help you to maintain a **healthy weight**

BOOST Boost self-esteem, mood, self-perception, sleep quality and energy

REDUCE RISK Reduce your risk of stress, depression, dementia and Alzheimer's disease^{2,3,4}

Competition Time - Issue 10



The photo above is of the opening of the Persley Bridge in Aberdeen.

Ian Leith's Great Grandfather, James Leith, owned and operated a number of monumental granite quarries in the area, including Cairncry and Persley. Granite from these quarries and Kemnay was used locally by James in the construction of the Persley Bridge across the River Don.

To be in with a chance of winning **£100.00**, please tell us:

What year was the Persley Bridge opened?

Entrants should send their answer, including name, place of work and contact details to Caroline Anderson (canderson@leiths-group.co.uk) by Friday 15th June.

The winner will be randomly picked from all correct entries and announced by Friday 22nd June and featured in the next edition of Leiths News.

Good Luck!

Competition Winner Issue 9

Thanks to everyone who entered the last Leiths News Competition in issue 9. The competition gave employees an opportunity to win £100.00 by answering the following question: What is the name of the Overhead Cableway which John Fyfe invented for transporting granite blocks out of the Fyfe Glenrock Quarry in Kemnay?

The answer was: A Blondin.

The lucky draw winner was Deborah Milne, Sales Administrator, based at Leiths Head Office in Cove. Well done Deborah.

Group Companies

1 Leiths

Leiths (Scotland) Ltd
Rigifa, Cove, Aberdeen
Aberdeenshire AB12 3LR
Tel: 01224 876333
Fax: 01224 876332

4 Markon

Antonine House
6-10 Dunnswood Road
Wardpark South, Cumbernauld
Glasgow G67 3EN
Tel: 01236 875134
Fax: 01236 875525

2 Lawrie Demolition

Rigifa, Cove
Aberdeen
Aberdeenshire AB12 3LR
Tel: 01224 876333
Fax: 01224 876332

5 M&M Road Surfacing

9A Bankhead Medway
Sighthill Industrial Estate
Edinburgh
EH11 4BY
Tel: 0131 6244466
Fax: 0131 6244467

3 Joss

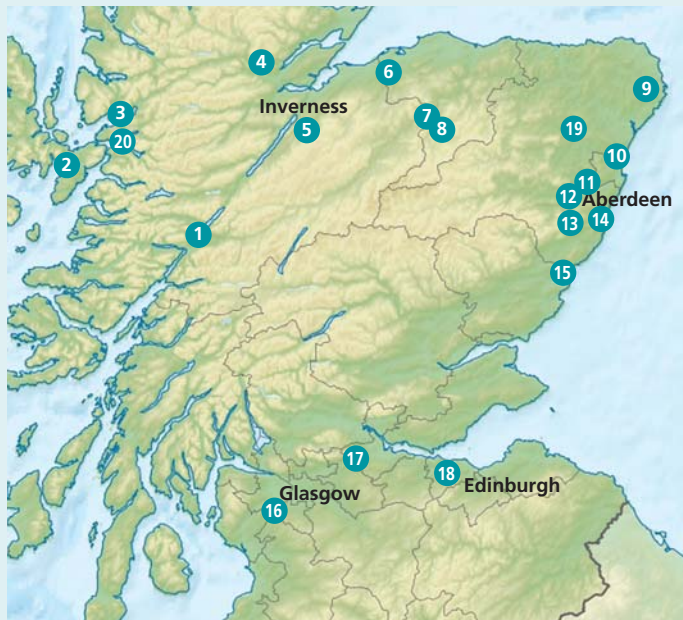
Joss (Aberdeen) Ltd
Parkhill, Dyce
Aberdeen AB21 7AT
Tel: 01224 774422
Fax: 01224 772444

6 Ross

A Ross & Sons Ltd
Daviot
Inverness
Inverness-shire IV2 6XN
Tel: 01463 772255
Fax: 01463 772321



Group Resources



1. Highland Lime

Torlundy, Fort William
Inverness-shire, PH33 6SQ
T: 01397 702227
F: 01397 702308

SERVICES (See Key)

A B E F J I K N O

2. Torrin Quarry

Leiths (Scotland) Ltd
Broadford
Isle of Skye, IV49 9BA
T: 01471 822265
F: 01471 822266

SERVICES (See Key)

A D F J K N

3. Kishorn Quarry

Nr Strathcarron
Ross-shire, IV54 8XF
T: 01471 822265
F: 01471 822266

SERVICES (See Key)

D F J N

4. Achilty Quarry

Leiths, Contin, Strathpeffer
Ross-shire, IV14 9EG
T: 01997 421122
F: 01997 421145

SERVICES (See Key)

C D F K R

KEY

A Agricultural Lime
B Animal Feed
C Asphalt Products
D Decorative Stone
E Filler
F Hardrock Quarry

5. Mid Lairgs Quarry

A Ross & Sons Ltd
Daviot, Inverness
Inverness-shire
IV2 6XN
T: 01463 772211
F: 01463 772321

SERVICES (See Key)

C D F J K N O

6. New Forres Quarry

Leiths (Scotland) Ltd
Rafford, Forres
Moray
IV36 2RQ
T: 01309 671188
F: 01309 671199

SERVICES (See Key)

C D F K N P

7. Bluehills Quarry

Leiths (Scotland) Ltd
Craigellachie
Moray
AB55 4BW
T: 03301 190627
F: 01340 820890

SERVICES (See Key)

C D F K N

8. Parkmore Quarry

Leiths (Scotland) Ltd
Dufftown, Keith
Moray, AB55 4DL
T: 01340 820200
F: 01340 820890

SERVICES (See Key)

A D F J R

9. Longside Concrete Plant

Faichfield, Longside
Peterhead, AB42 3ED
T: 01779 821466
F: 01779 821354

SERVICES (See Key)

J

10. Loch Hills Quarry

Joss (Aberdeen) Ltd
Parkhill, Dyce
Aberdeen, AB21 7AT
T: 01224 774422
F: 01224 772444

SERVICES (See Key)

C D G J K O

11. North Lasts Quarry

Leiths (Scotland) Ltd
Peterculter, Aberdeen
Aberdeenshire, AB14 0PE
T: 01224 732690
F: 01224 876332

SERVICES (See Key)

C D F K N

12. Nether Park Quarry

Joss (Aberdeen) Ltd
Drumoak, Banchory
Kincardineshire, AB31 5AD
T: 01224 660468
F: 01224 772444

SERVICES (See Key)

D O

13. Lochton Precast Concrete

Leiths (Scotland) Ltd
Slug Road, Durris
Banchory, AB31 6DD
T: 01330 844444
F: 01330 844417

SERVICES (See Key)

I J

14. Blackhills Quarry

Cove, Aberdeen
Aberdeenshire, AB12 3LR
T: 01224 897568
F: 01224 897590

SERVICES (See Key)

C D F J K N

15. Montrose Concrete Products

Leiths (Scotland) Ltd
Broomfield Industrial Estate
Montrose, DD10 8SY
T: 01674 677037
F: 01674 672809

SERVICES (See Key)

I J

16. Lugton Lime

Lugton
Kilmarnock
Ayrshire, KA3 4EB
T: 01505 850435
F: 01505 850590

SERVICES (See Key)

A F H K

17. Markon Office

Markon
Antonine House,
6-10 Dunnswood Road
Wardpark South
Cumbernauld
Glasgow, G67 3EN
T: 01236 875134
F: 01236 875525

SERVICES (See Key)

L M Q

18. M&M Road Surfacing

M&M Road Surfacing Ltd
9A Bankhead Medway
Sighthill Industrial Estate
Edinburgh, EH11 4BY
T: 0131 6244466
F: 0131 6244467

SERVICES (See Key)

P

19. Fyfe Glenrock

Academy Way
Colpy Road Industrial Estate
Oldmeldrum
Inverurie
AB51 0JZ
T: 01651 873873
F: 01651 873399

SERVICES (See Key)

S

20. Kishorn Port Ltd

Kishorn Base, Kishorn
Strathcarron, IV54 8XA
T: 01397 773 840
F: 01397 773 850

SERVICES

Dry Dock

Port & Harbour Services

Leiths News is published for employees, customers and colleagues of the Leiths Group and its associated companies by Leiths Scotland Ltd, Rigifa, Cove, Aberdeen, AB12 3LR.

If you have any stories for the next issues of Leiths News, please send them to: canderson@leiths-group.co.uk

Rigifa, Cove
Aberdeen AB12 3LR

T: 01224 876333

F: 01224 876332

www.leiths-group.co.uk

LEITHS
Built on Quality